



Selling Yearling and Two-Year Old Bulls, and Open Commercial Heifers

STANDARD HILL SCONNECTION

RED ANGUS, BLACK ANGUS, POLLED HEREFORD BULL & FEMALE SALE

Friday, March 12, 2021 2 pm MST

NORTH OF MAIDSTONE, SK online at dlms.ca



www.shlivestock.com

ON OFFER

- 18 Black Angus Two-Year Old Bulls
- 15 Black Angus Yearling Bulls
- 3 F1 Hereford Angus Two-Year Olds
- 10 Polled Hereford Two-Year Old Bulls
- 6 Polled Hereford Yearling Bulls
- 12 Red Angus Yearling Bulls
- 16 F1 Hereford Angus Open Heifers
- 19 Commercial Open Heifers

Friday, March 12, 2021

2 PM MST (Alberta time)

at Standard Hill Livestock North of Maidstone, SK,
online at dlms.ca and on the phone when required

Staff/Sale Day Phones

Stephen Myer	306-893-8414
Michael Gerlinsky	306-821-6446
Brennan Schachtel	306-821-2504
Shane Castle	306-741-7485
Ryan Hurlburt, Auctioneer	306-292-9812
Jim Pulyk, Ringman	780-787-0646
Travis Bygrove, Ringman	780-205-6008

Internet Bidding Available

DLMS
www.dlms.ca

For more information call DLMS:
Mark Shologan 780.699.5082 or
DLMS Purebred Team 780.991.3025

View lot information and videos online at

www.shlivestock.com

Standard Hill & MG pics/video shot Jan1
Eye Hill pics/video shot Jan22

Due to Covid 19 we will be booking farm visits ahead of time to decrease sale day crowd numbers, but we still want to share some hospitality. Please contact consignors.

Presented By



Stephen & Christine Myer & Family
Box 227 Maidstone, SK S0M 1M0
Ph) 306-893-2298 C) 306-893-8414
standard.hill@live.ca shlivestock.com
Black Angus (Lots 1-29) Hybrid Bulls (Lots 34-36)
Polled Herefords (Lots 37-52)



Michael & Jeanette Gerlinsky & Family
Box 2765 Lloydminster, SK S9V 0Z1
Ph) 306-821-6446 mgangus1@gmail.com
Black Angus (Lots 30-33)



Brennan & Taryn Schachtel & Family
Box 421 Marshall, SK S0M 1R0
Ph) 306-821-2504 eyehillb@gmail.com
Red Angus (Lots 53-64)

SALE CONSULTANT

Castlerock Marketing

Shane & Tammy Castle 306-741-7485

Devin Warrilow 780-581-4329

Mark Forsyth 306-784-7544

castlerock.mktg@sasktel.net

www.castlerockmarketing.com



Welcome to the 2021 Standard Hill Connection

Thank you for taking the time to view our sale offering. Along with our guests, Eye Hill Stock Farm and MG Angus, we invite you to partake in our 2021 sale.

Things are a bit different in the world this year. We were very fortunate to just sneak in under the wire of “normalcy” for last year’s sale, but for this year we will likely have some changes. We have had online bidding for many years, and we will lean heavier on it this year. We will also have multiple people available on the phone to take bids. Due to the ever-changing government restrictions **we want to welcome as many of you to the farm to view the cattle and talk shop ahead of time as possible.** We will undoubtedly be able to host some number of people at the live sale, but we won’t know how many for sure until closer to sale day. However many folks we can have, we will be pleased to offer our normal hospitality.

We strive to offer some of the best British Breed cattle for sale every year. We cull hard. If I don’t like something about an animal I don’t expect someone else to put up with it. This year’s offering is a culmination of our work to date. We back everything up with the breeder guarantee. Everyone who has toured the bulls is impressed with the consistency and quality, especially in the Black Angus offering. For a variety of reasons, this year we decided to sell the select purebred females usually in the sale off farm. We are once again offering a solid group of F1 Hereford Angus open heifers and Brennan has sourced a quality group of Red Angus influence commercial heifers from customers.

Thank you to our past and continuing customers. We look forward to a bright future and meeting new people along the way. **If you have any questions or would like to come comb through the cattle call me at 306-893-8414.**

Stephen Myer



Jayce, Karli, Landen, Christine, Stephen



REF **Sire**



BELVIN DISPUTE 6125

Purchased in the spring of 2017 with MG Angus, Dispute impresses with his presence, length of body, depth of rib, and eye appeal. Dispute is sired by HF Junction 18B, who produced a multitude of strong sellers for Belvin, and his Ring Creek dam has been a consistent top producer. His progeny consistently have ample muscling and growth. After 87 progeny, 6125 is in the top 10% of the breed for WW, with male calves average 736. He has 8 daughters calving for us in 2021 and 14 in the replacement pen. MG has 4 in production this year and 5 more replacements. Udders all look great. Sire of Lots 30-32 for MG Angus.

STANDARD HILL LIVESTOCK & MG ANGUS

BLACK ANGUS



REF **Sire**



STANDARD HILL BENGAL 479A

A homeraised son of HF Tiger 5T, walking rights to Bengal 479A were originally sold when he was a yearling to K-Cow Ranch at Elk Point, AB and we used him a bit by AI. Given how his AI calves turned out we jumped on a chance to get him walking our pastures. At the mature weight of approximately 2800 lbs Bengal was a beast. He had tremendous length of spine, was muscular yet soft made, and passed a good haircoat onto his progeny. He was always very docile. After 126 progeny his epds put him in the top 15% for ce and 10% for bw of the breed. We have 12 daughters in production. Sire of Lot 33 for MGA.

STANDARD HILL LIVESTOCK & MG ANGUS

BLACK ANGUS



REF **Sire**



STANDARD HILL MAJOR 350C

Major was a standout early on and we knew right away we wanted him working at home. He developed into a moderate framed 2200 lbs tank. We have used him successfully on heifers and cows. Major's progeny exhibit strength in length of body, base width, depth of rib, fertility, muscling, and foot structure. His dam, a LLB Tradition daughter, has a level udder with small teats. After 70+ progeny he is in the top 15% of the breed for BW (average 87 on bulls & 80 on heifers), and top 1% for milk with 10 daughters in production and 9 in the replacement pen. We will have a large group of Major daughters producing for many years.

STANDARD HILL LIVESTOCK

BLACK ANGUS



REF **Sire**



STANDARD HILL LIVESTOCK

BLACK ANGUS

DFCC 244B FLO RIDER 22F

Flo Rider was our pick of the 2019 Double F Bull Sale. His most admirable qualities were his structural soundness while stationary and on the move, muscle shape in top and rear quarter, and length and depth of body. Other valuable qualities this Six Mile Complete son possessed were his great hair coat, angus character, a small birthweight, and lots of testicle. Jake toured me around the farm and I admired 22F's Kodiak mother for her tightly suspended udder, small teat size, eye appeal, and moderate frame. 34 calves by him were born in 2020, mostly off heifers, with an average bw of 79 lbs. Bred well and has maintained condition.



YEARLING



LOT 19 SON

REF **Sire**



STANDARD HILL LIVESTOCK

BLACK ANGUS

LAZY E FORTITUDE 6004D

Purchased from Lazy E Bar Angus at Bashaw, AB as a two year old for his eye appeal, growth, and soundness. Level in his lines and always looking proud this PA Fortitude son with an actual birth weight of 86 lbs is off a straight Canadian Bardolene cow with a good udder. 6004D was 2000 lbs at 22 months of age. His calves have displayed his great foot, length of spine, and growth. He has seven daughters coming into production this year, and early indicators say they will be larger framed cows with exceptional milk and udder conformation. He is the sire of lots 3 and 4 in this years sale. Owned with MG Angus.



LONG YEARLING



SON



TWO-YEAR OLD BLACK ANGUS BULL

STANDARD HILL CLASH 361G

SHL 361G 2093750 DOB: Feb 2/19

HF JUNCTION 18B
S: BELVIN DISPUTE 6125
BARBARA OF RING CREEK 65Y
STANDARD HILL YAHOO 68Y
D: STANDARD HILL BEBE 327A
STANDARD HILL BLACKBIRD 9W

YOUNG DALE YOHANN 39Y
HF ELSIEMERE 106W
RING CREEK BARDOLENE 69W
BARBARA OF RING CREEK 31W
HF TIGER 5T
STANDARD HILL LASSIE 39U
S A V FINAL ANSWER 0035
STANDARD HILL BLACKBIRD 79T

bw: 83_(twin) ww(adj): 802 yw(adj): 1175 Dec 19: 1850



DAM

This guy has been a standout from an early age as far as capacity and muscle mass, and it's evident now in his current weight. He was a twin so don't let his bw fool you, he is a cow bull. His dam has produced other top end bulls selling to Daniel deMontarnal of Edam and Verol Smith of Abbey, as well as two females that we have retained, Lot 19 is off one of them.

EPDS CE -0.5 BW 2.5 WW 58 YW 89 SC 0.77 MCE 1.0 MILK 24

LOT 2



STANDARD HILL KLAW 390G

SHL 390G 2093762 DOB: Feb 4/19

HF TIGER 5T	HF KODIAK 5R
S: STANDARD HILL BENGAL 479A	HF ECHO 84R
STANDARD HILL LADY ANN 23P	R R 9440 SCOTCH CAP 1483
	STANDARD HILL LADY 44G
STANDARD HILL WISEMAN 41W	SINCLAIR RITO LEGACY 3R9
D: STANDARD HILL ANN 496B	STANDARD HILL LADY ANN 24G
STANDARD HILL LADY ANN 40S	RR TRAVELER 5204
	STANDARD HILL LADY ANN 30K

bw: 94 ww(adj): 741 yw(adj): 1124 Dec 19: 1785



390G is a muscular made bull with an extended skeleton and deep rib. He is strong topped and carries his thick rear quarter deep down into his stifle. Like his papa he is extremely long spined and not boxy in his shoulder. His dam is not a tall cow by any stretch, but she has depth of body that makes her one of heaviest cows. She passed the rib dimension down to this fella.

TWO-YEAR OLD BLACK ANGUS BULL

EPDS CE 0.0 BW 1.9 WW 37 YW 67 SC 0.18 MCE 0.0 MILK 21

LOT 3



STANDARD HILL FORTRESS 335G

SHL 335G 2115554 DOB: Feb 8/19

PA FORTITUDE 2500	GAR-EGL PROTEGE
S: LAZY E FORTITUDE 6004D	G G CLARA 0171
LAZY E BLACKBIRD 694B	LAZY E BARDOLENE 14T
	SPARLING BLACKBIRD 312X
S A V FINAL ANSWER 0035	SITZ TRAVELER 8180
D: STANDARD HILL BLACKBIRD 1X	S A V EMULOUS 8145
STANDARD HILL BLACKBIRD 68U	RITO 4L60 OF 2536 BVND 208
	STANDARD HILL BLACKBIRD 52M

bw: 81 ww(adj): 584 yw(adj): 1030 Dec 19: 1680



Attractive made bull with lots of muscle. 335G may be the smoothest bodied, level made bull in the offering. He has a super clean front end, large crest, and an alert look to him. His pedigree coupled with his actual bw and moderate, smooth frame, and growth should prove him useful on heifers. His Final Answer dam has always been admired for her dimension.

TWO-YEAR OLD BLACK ANGUS BULL

EPDS CE 7.0 BW 0.3 WW 31 YW 63 SC 0.82 MCE 11.0 MILK 18

LOT 4



STANDARD HILL FORTRESS 497G

SHL 497G 2093728 DOB: Feb 16/19

PA FORTITUDE 2500	GAR-EGL PROTEGE
S: LAZY E FORTITUDE 6004D	G G CLARA 0171
LAZY E BLACKBIRD 694B	LAZY E BARDOLENE 14T
	SPARLING BLACKBIRD 312X
BASIN RAINMAKER 814Z	BASIN RAINMAKER D S 380U
D: STANDARD HILL BLACKBIRD 54S	BASIN PAMELLA 676X
STANDARD HILL BLACKBIRD 42N	STANDARD HILL TRAVELER 6G
	STANDARD HILL BLACKBIRD 31J

bw: 92 ww(adj): 771 yw(adj): 1090 Dec 19: 1770



Another smooth bodied Fortitude bull off a cow bred and proven to have longevity. His dam raised twelve progeny between us and the Smiths. 497G promises to be a vigorous breeder as he's got libido and athleticism. He fits in well with our group of bulls this year. They are all muscular, easy fleshing, and long bodied. If you like one, you'll find multiple bulls that fit with him.

TWO-YEAR OLD BLACK ANGUS BULL

EPDS CE -4.0 BW 2.4 WW 33 YW 56 SC 0.96 MCE 3.0 MILK 25

LOT 5



STANDARD HILL DISPUTE 317G

SHL 317G 2115209 DOB: Mar 1/19

HF JUNCTION 18B	YOUNG DALE YOHANN 39Y
S: BELVIN DISPUTE 6125	HF ELSIEMERE 106W
BARBARA OF RING CREEK 65Y	RING CREEK BARDOLENE 69W
	BARBARA OF RING CREEK 31W
SCC BANDO 45A	LLB 184S BANDO 502X
D: STANDARD HILL PRIDE 338E	SCC PRIDE 31X
STANDARD HILL PRIDE 15X	S A V FINAL ANSWER 0035
	STANDARD HILL PRIDE 81U

bw: 92 ww(adj): 735 yw(adj): 1176 Dec 19: 1820



Larger framed performance bull off a first calver with cow power in the pedigree. 317G has superior length of body and depth of rib that put him near the top of the pen for weight. His young Bando dam has the great udder that we look for, maintenance free and heavy on the longevity. His grand dam 15X is one of our largest bodied cows. Her progeny have impact.

TWO-YEAR OLD BLACK ANGUS BULL

EPDS CE -2.0 BW 3.4 WW 54 YW 86 SC 1.02 MCE 4.0 MILK 18

LOT 6



STANDARD HILL DISPUTE 341G

SHL 341G 2115210 DOB: Mar 3/19

HF JUNCTION 18B	YOUNG DALE YOHANN 39Y
S: BELVIN DISPUTE 6125	HF ELSIEMERE 106W
BARBARA OF RING CREEK 65Y	RING CREEK BARDOLENE 69W
	BARBARA OF RING CREEK 31W
SCC BANDO 45A	LLB 184S BANDO 502X
D: STANDARD HILL ANN 366E	SCC PRIDE 31X
STANDARD HILL ANN 333A	HF TIGER 5T
	STANDARD HILL LADY ANN 60W

bw: 93 ww(adj): 815 yw(adj): 1255 Dec 19: 1920



A 3/4 brother to lot 5, even more large and in charge. Once again off a Bando first calver, I can't help but be blown away by the job these young cows did. If you want to add some weight to your calves I'd recommend this guy. He is the heaviest bull in the pen and his EPDs for ww and yw rank in the top 3 and 10 percent for the breed. He also has the largest testicles in the pen.

TWO-YEAR OLD BLACK ANGUS BULL

EPDS CE -3.0 BW 4.1 WW 69 YW 108 SC 0.67 MCE 4.0 MILK 21

LOT 7



STANDARD HILL DISPUTE 489G

SHL 489G 2093726 DOB: Mar 3/19

HF JUNCTION 18B	YOUNG DALE YOHANN 39Y
S: BELVIN DISPUTE 6125	HF ELSIEMERE 106W
BARBARA OF RING CREEK 65Y	RING CREEK BARDOLENE 69W
	BARBARA OF RING CREEK 31W
STANDARD HILL TRAVELER 6G	RR TRAVELER 5204
D: STANDARD HILL DAISEY 74R	STANDARD HILL JODY 16C
G B T DAISEY 19K	KENWAW TOUCHSTONE 5F
	2J DAISEY 21E

bw: 88 ww(adj): 752 yw(adj): 1095 Dec 19: 1735



A muscular, smooth, long bull that patterns his sire very well. 489G is attractive in his lines and clean fronted. His dam produced 13 calves for Standard Hill and still had a great udder and feet. She has been proven to put extra rear quarter and top dimension in her progeny. We have successfully marketed her bulls and we retained the only heifer calf she produced for us.

TWO-YEAR OLD BLACK ANGUS BULL

EPDS CE -2.0 BW 1.6 WW 40 YW 47 SC 0.28 MCE 2.0 MILK 21

LOT 8



FALL 2020

STANDARD HILL MAJOR 360G

SHL 360G 2093746 DOB: Apr 2/19

GVC SETTLER 004X S A V PIONEER 7301
 S: STANDARD HILL MAJOR 350C G V C FRONTIER LADY 272M
 STANDARD HILL LADY ANN 117X LLB 557S TRADITION 181U
 HF TIGER 5T HF KODIAK 5R
 D: STANDARD HILL ELBA 33Y HF ECHO 84R
 STANDARD HILL ELBA 28T RITO 616 OF 4B20 6807
 STANDARD HILL ELBA 57L

bw: 73 ww(adj): 654 yw(adj): 1101 Dec 19: 1765

Calving ease bull with shape. 360G has a very reasonable birth weight of 73 lbs to go with EPDs that put him in the top 15 and 1 percent of the breed for CE and BW. Although he is stocky made we recommend him for heifers. We also used his sire on heifers. His dam has raised us 10 calves including Jayce's foundation 360B cow and two sets of twins on her own.

TWO-YEAR OLD BLACK ANGUS BULL

EPDS CE 8.0 BW -2.2 WW 37 YW 72 SC 0.55 MCE 8.0 MILK 28

LOT 9



TIGER

STANDARD HILL MAJOR 366G

SHL 366G 2093753 DOB: Apr 4/19

GVC SETTLER 004X S A V PIONEER 7301
 S: STANDARD HILL MAJOR 350C G V C FRONTIER LADY 272M
 STANDARD HILL LADY ANN 117X LLB 557S TRADITION 181U
 HF TIGER 5T HF KODIAK 5R
 D: STANDARD HILL ANN 333A HF ECHO 84R
 STANDARD HILL LADY ANN 60W HYLINE RIGHT TIME 338
 STANDARD HILL LADY ANN 14M

bw: 86 ww(adj): 778 yw(adj): 1220 Dec 19: 1850

Performance bull with moderate birth-weight. 366G is another power bull from the cow line that also produced Lot 6. He might be a bit piecy, but he brings length, depth, and width that pounds the scale down. His dam has a tightly suspended, small teated udder, despite producing huge weaning weights that help sit this guy's milk EPD in the top 1% of the breed.

TWO-YEAR OLD BLACK ANGUS BULL

EPDS CE 2.0 BW 1.5 WW 57 YW 103 SC 1.13 MCE 6.0 MILK 33

LOT 10



4200

STANDARD HILL BENGAL 359G

SHL 359G 2093745 DOB: Apr 11/19

HF TIGER 5T HF KODIAK 5R
 S: STANDARD HILL BENGAL 479A HF ECHO 84R
 STANDARD HILL LADY ANN 23P R R 9440 SCOTCH CAP 1483
 S A V NET WORTH 4200 STANDARD HILL LADY 44G
 D: STANDARD HILL LADY ANN 24Y S A V 8180 TRAVELER 004
 STANDARD HILL LADY ANN 24R S A V MAY 2410
 HYLINE RIGHT TIME 338
 STANDARD HILL LADY ANN 24G

bw: 82 ww(adj): 720 yw(adj): 1069 Dec 19: 1625

Moderate frame and moderate birthweight. 359G is an option for heifers. He should not have a large mature weight, like his Net Worth dam that weighs 1500 lbs. With his calving ease traits he still exhibits decent muscle shape and growth. He is smooth shouldered and long spined. A maternal brother Voltage 359B is a stud for our friends at McKeivitt's Finest Angus.

TWO-YEAR OLD BLACK ANGUS BULL

EPDS CE 7.0 BW 0.4 WW 38 YW 68 SC 0.47 MCE 8.0 MILK 22

LOT 11



STANDARD HILL BENGAL 326G

SHL 326G 2115552 DOB: Apr 18/19

HF TIGER 5T	HF KODIAK 5R
S: STANDARD HILL BENGAL 479A	HF ECHO 84R
STANDARD HILL LADY ANN 23P	R R 9440 SCOTCH CAP 1483
	STANDARD HILL LADY 44G
TC ABERDEEN 759	C R A BEXTOR 872 5205 608
D: STANDARD HILL LASS 316A	TC BLACKBIRD 4034
STANDARD HILL LASSIE 39U	SCA 3299 OF IDEAL 1418
	STANDARD HILL LASSIE 29P

bw: 100 ww(adj): 724 yw(adj): 1108 Dec 19: 1750



Solidly constructed bull with muscle. 326G is a quite complete package from a phenotypical point of view. He checks the boxes: long, deep, level, nice shouldered, clean fronted, good headed, square on his legs, strong topped, masculine, thick rumped. And in addition a high capacity momma that milks and has a good udder conformation. I think you'll like him.

TWO-YEAR OLD BLACK ANGUS BULL

EPDS CE -1.0 BW 3.8 WW 40 YW 74 SC 1.26 MCE 3.0 MILK 21

LOT 12



STANDARD HILL MAJOR 348G

SHL 348G 2093737 DOB: Apr 19/19

GVC SETTLER 004X	S A V PIONEER 7301
S: STANDARD HILL MAJOR 350C	G V C FRONTIER LADY 272M
STANDARD HILL LADY ANN 117X	LLB 557S TRADITION 181U
	STANDARD HILL LADY ANN 41R
S A V FINAL ANSWER 0035	SITZ TRAVELER 8180
D: STANDARD HILL LADY ANN 14X	S A V EMULOUS 8145
STANDARD HILL LADY ANN 23U	K C F BENNETT TOTAL
	STANDARD HILL LADY ANN 21G

bw: 87 ww(adj): 655 yw(adj): 1021 Dec 19: 1545



Moderate framed calving ease bull. 348G is moderate in frame like his dam and sire. Also like them he is smooth bodied and muscular. He is a great example of an exceptionally clean fronted bull with the attractive wide head with hooded eyes that we look for. He may be the smallest in the pen but he is a quality individual that I would consider using on heifers.

TWO-YEAR OLD BLACK ANGUS BULL

EPDS CE 3.0 BW 0.0 WW 35 YW 64 SC -0.01 MCE 8.0 MILK 26

LOT 13



STANDARD HILL BENGAL 509G

SHL 509G 2093735 DOB: Apr 25/19

HF TIGER 5T	HF KODIAK 5R
S: STANDARD HILL BENGAL 479A	HF ECHO 84R
STANDARD HILL LADY ANN 23P	R R 9440 SCOTCH CAP 1483
	STANDARD HILL LADY 44G
BASIN RAINMAKER 814Z	BASIN RAINMAKER D S 380U
D: STANDARD HILL BLACKBIRD 82W	BASIN PAMELLA 676X
STANDARD HILL BLACKBIRD 77S	C R A BEXTOR 872 5205 608
	STANDARD HILL BLACKBIRD 11M

bw: 83 ww(adj): 751 yw(adj): 1167 Dec 19: 1770



Complete bull with dual purpose. 509G will impress you with his square build, muscle, capacity, and smoothness. He has a good haircoat, as most of the Bengals do. He could work on heifers, but has the power you'd use on cows. His dam is one of our last Rainmaker 814Z cows. One of the largest paternal groups when we purchased the herd in 2012, they have made us \$\$\$.

TWO-YEAR OLD BLACK ANGUS BULL

EPDS CE 5.0 BW -0.1 WW 36 YW 68 SC 0.66 MCE 7.0 MILK 27

LOT 14



STANDARD HILL BENGAL 334G

SHL 334G 2093736 DOB: Apr 28/19

HF TIGER 5T HF KODIAK 5R
 S: STANDARD HILL BENGAL 479A HF ECHO 84R
 STANDARD HILL LADY ANN 23P R R 9440 SCOTCH CAP 1483
 STANDARD HILL LADY ANN 44G
 GBT DESIGN 878 41P BON VIEW NEW DESIGN 878
 D: STANDARD HILL LADY ANN 117W HAPPYVALE GERTIE 9G
 STANDARD HILL LADY ANN 60L R P 3RD BUSHWAKER
 STANDARD HILL LADY ANN 15H

bw: 89 ww(adj): 701 yw(adj): 1126 Dec 19: 1700

Smooth made, long bodied, and muscular. 334G is another complete type of bull that will check many boxes. I would use him on smaller cows before I tried him on heifers. He is the typical Bengal 479A son, easy fleshing, attractive, and shapely. Our main reason for bringing 479A back from K-Cow was for the females, which are now our second largest group in production.

TWO-YEAR OLD BLACK ANGUS BULL

EPDS CE 1.0 BW 1.9 WW 37 YW 71 SC -- MCE 2.0 MILK 20

LOT 15



STANDARD HILL MAJOR 333G

SHL 333G 2093733 DOB: May 10/19

GVC SETTLER 004X HYOUNG DALE YOHANN 39Y
 S: STANDARD HILL MAJOR 350C HF ELSIEMERE 106W
 STANDARD HILL LADY ANN 117X RING CREEK BARDOLENE 69W
 BARBARA OF RING CREEK 31W
 HYLINE RIGHT TIME 338 LEACHMAN RIGHT TIME
 D: STANDARD HILL LADY ANN 60W HYLINE PRIDE 265
 STANDARD HILL LADY ANN 14M C A FUTURE DIRECTION 5321
 STANDARD HILL LADY ANN 15H

bw: 87 ww(adj): 740 yw(adj): 1147 Dec 19: 1680

Muscular and attractive. I keep saying the bulls are complete, here's another example. 333G is a Major son, more moderate in frame, generally lots of muscle and depth of rib with high maternal value. Major daughters have awesome udders. His Milk EPD is in the top 1% of the breed. His dam has been a big producer of pounds, thus I'd be cautious to try him on heifers.

TWO-YEAR OLD BLACK ANGUS BULL

EPDS CE -1.0 BW 1.7 WW 49 YW 84 SC 0.77 MCE 4.0 MILK 32

LOT 16



STANDARD HILL MAJOR 358G

SHL 358G 2093766 DOB: May 16/19

GVC SETTLER 004X S A V PIONEER 7301
 S: STANDARD HILL MAJOR 350C G V C FRONTIER LADY 272M
 STANDARD HILL LADY ANN 117X LLB 557S TRADITION 181U
 STANDARD HILL LADY ANN 41R
 RNRF ERIC 220A ANGUS ACRES ERIC 78U
 D: STANDARD HILL ANN 366C RNRF ELNORA 220S
 STANDARD HILL ANN 333A HF TIGER 5T
 STANDARD HILL LADY ANN 60W

bw: 89 ww(adj): 769 yw(adj): 1145 Dec 19: 1650

Another solid Major son. Attractive made: super clean in neck and sheath, and level in his lines with a good head and masculine crest. This guy is moderate in frame and I would consider him for use on heifers. Udder quality from both sides of his pedigree is second to none.

TWO-YEAR OLD BLACK ANGUS BULL

EPDS CE -2.0 BW 1.6 WW 41 YW 81 SC 0.45 MCE 6.0 MILK 28

LOT 17



STANDARD HILL BENGAL 65H

SHL 65H 2188231 DOB: Jan 21/20

HF TIGER 5T	HF KODIAK 5R
S: STANDARD HILL BENGAL 479A	HF ECHO 84R
STANDARD HILL LADY ANN 23P	R R 9440 SCOTCH CAP 1483
	STANDARD HILL LADY 44G
SCC BANDO 45A	LLB 184S BANDO 502X
D: STANDARD HILL DAISEY 371C	SCC PRIDE 31X
STANDARD HILL DAISEY 97Y	LLB 557S TRADITION 181U
	STANDARD HILL DAISEY 15T

bw: 95 ww(adj): 659 yw(adj): 1161 Dec 22: 1070



DAM

Soggy made performance bull. 65H is long and deep bodied, attractive and hairy. All the Bengals are easy fleshing and loose hided. From behind you'll notice his muscularity in rump, stifle and loin. His dam is a power producer, a long bodied 1700 lbs Bando cow that milks well and is just coming into her prime.

YEARLING BLACK ANGUS BULL

EPDS CE 2.0 BW 3.1 WW 42 YW 79 SC -- MCE 6.0 MILK 18

LOT 18



STANDARD HILL BENGAL 31H

SHL 31H 2188229 DOB: Jan 23/20

HF TIGER 5T	HF KODIAK 5R
S: STANDARD HILL BENGAL 479A	HF ECHO 84R
STANDARD HILL LADY ANN 23P	R R 9440 SCOTCH CAP 1483
	STANDARD HILL LADY 44G
MOHNEN PULSE 533	MOHNEN HEARTRATE 1751
D: STANDARD HILL ROXY 346D	MOHNEN JILT 2360
STANDARD HILL BEBE 352B	MINBURN QUANTUM 55Y
	STANDARD HILL BLACKBIRD 3Y

bw: 92 ww(adj): 660 yw(adj): 1138 Dec 22: 1045



PULSE

Boxy made bull with libido. A Bengal son with a large barrel and width. His Pulse dam, a product of our AI program, is squarely made and moderate framed like him. She has a sweet little udder, small teats and tight attachment. Definately a bull that catches your eye.

YEARLING BLACK ANGUS BULL

EPDS CE 10.5 BW -0.2 WW 40 YW 75 SC 0.40 MCE 8.0 MILK 23

LOT 19



STANDARD HILL COMPLETE 30H

SHL 30H 2155852 DOB: Jan 24/20

SIX MILE COMPLETE 244B	CONNELLY COMPLETE 8454
S: DFCC 244B FLO RIDER 22F	SIX MILE QUEEN MOTHER 849U
DFCC 9194 LIBBY 13Z	SOO LINE KODIAK 9194
	LODGE DUCHESS 42T
STANDARD HILL MAJOR 350C	MOHNEN HEARTRATE 1751
D: STANDARD HILL ROXY 361F	MOHNEN JILT 2360
STANDARD HILL BEBE 327A	MINBURN QUANTUM 55Y
	STANDARD HILL BLACKBIRD 3Y

bw: 74 ww(adj): 578 yw(adj): 1035 Dec 22: 935



DAMS FULL SIB

Heifer bull with maternal power. 30H is the first of the much anticipated progeny off our Major daughters. He is a great option for heifers because of his actual birthweight of 74 lbs, epds for calving ease and bw in the top 15 and 3 percent of the breed, and a smooth design. 361F is a favourite of her contemporary group.

YEARLING BLACK ANGUS BULL

EPDS CE 7.5 BW -1.3 WW 46 YW 77 SC -- MCE 6.0 MILK 28

LOT 20



STANDARD HILL COMPLETE 53H

SHL 53H 2155858 DOB: Jan 25/20

SIX MILE COMPLETE 244B
S: DFCC 244B FLO RIDER 22F
DFCC 9194 LIBBY 13Z

CONNELLY COMPLETE 8454
SIX MILE QUEEN MOTHER 849U
SOO LINE KODIAK 9194
LODGE DUCHESS 42T

SCC BANDO 45A
D: STANDARD HILL ANN 391F
STANDARD HILL ANN 490C

LLB 184S BANDO 502X
SCC PRIDE 31X
EARLY SUNSET FREEDOM 89U
STANDARD HILL LADY ANN 6S

bw: 74 ww(adj): 665 yw(adj): 1066 Dec 22: 975



Heifer bull with maternal power. 53H is the first of the much anticipated progeny off our Flo Rider herdsire. He is a great option for heifers: birthweight of 74 lbs, epds for calving ease and bw in the top 10 and 5 percent of the breed. This guy also has a great haircoat. His dam is a square made, sweet uddered female.

YEARLING BLACK ANGUS BULL

EPDS CE 8.5 BW -0.8 WW 45 YW 74 SC -- MCE 9.5 MILK 22

LOT 21



STANDARD HILL MAJOR 15H

SHL 15H 2149237 DOB: Jan 26/20

GVC SETTLER 004X
S: STANDARD HILL MAJOR 350C
STANDARD HILL LADY ANN 117X

S A V PIONEER 7301
G V C FRONTIER LADY 272M
LLB 557S TRADITION 181U
STANDARD HILL LADY ANN 41R

RNRF ERIC 220A
D: STANDARD HILL ANN 313D
STANDARD HILL LADY ANN 23U

ANGUS ACRES ERIC 78U
RNRF ELNORA 220S
K C F BENNETT TOTAL
STANDARD HILL LADY ANN 21G

bw: 67 ww(adj): 603 yw(adj): 961 Dec 22: 885



Heifer bull with eye appeal. 15H is patterned a lot like his maternal sib, 315F that sold in last year's sale to James Simmonds of Vermilion. Lots of rib, muscle, length, and eye appeal. His dam is a moderate 1300 lbs cow with an ideal udder.

YEARLING BLACK ANGUS BULL

EPDS CE -2.0 BW -1.9 WW 28 YW 49 SC 0.10 MCE 6.5 MILK 23

LOT 22



STANDARD HILL MAJOR 491H

SHL 491H 2148994 DOB: Jan 27/20

GVC SETTLER 004X
S: STANDARD HILL MAJOR 350C
STANDARD HILL LADY ANN 117X

S A V PIONEER 7301
G V C FRONTIER LADY 272M
LLB 557S TRADITION 181U
STANDARD HILL LADY ANN 41R

BASIN RAINMAKER 814Z
D: STANDARD HILL BLACKBIRD 16S
STANDARD HILL BLACKBIRD 63P

BASIN RAINMAKER D S 380U
BASIN PAMELLA 676X
STANDARD HILL TRAVELER 6G
STANDARD HILL BLACKBIRD 34L

bw: 80 ww(adj): 630 yw(adj): 1044 Dec 22: 950



Heifer bull out of an old matron. 491H is designed for heifers. He is moderate and stylish with decent muscle. He has good libido. His 15 year old dam is still going strong and has never missed. She is one of our quietest Angus cows and has the great udder we've been accustomed to on the Rainmaker daughters.

YEARLING BLACK ANGUS BULL

EPDS CE 0.0 BW 0.9 WW 31 YW 54 SC 0.74 MCE 7.5 MILK 31

LOT 23



STANDARD HILL MAJOR 54H

SHL 54H 2149289 DOB: Jan 29/20

GVC SETTLER 004X
 S: STANDARD HILL MAJOR 350C
 STANDARD HILL LADY ANN 117X
 STANDARD HILL BENGAL 308C
 D: STANDARD HILL ANN 393E
 STANDARD HILL ANN 497C

S A V PIONEER 7301
 G V C FRONTIER LADY 272M
 LLB 557S TRADITION 181U
 STANDARD HILL LADY ANN 41R
 STANDARD HILL BENGAL 479A
 STANDARD HILL BLACKBIRD 54T
 SCC BANDO 45A
 STANDARD HILL LADY ANN 12Y

bw: 78 ww(adj): 667 yw(adj): 1068 Dec 22: 975

Long bodied heifer bull. 54H is a soggy type Major son off of a sweet uddered young Bengal daughter. He has an extra rib which is a defining feature to the bottom of his maternal side. At 78 lbs actual, and a bw epd of -1.4 that is in the top 2% for the breed, use away on your heifers.

YEARLING BLACK ANGUS BULL

EPDS CE 4.5 BW -1.4 WW 37 YW 68 SC ---- MCE 8.5 MILK 27

LOT 24



STANDARD HILL COMPLETE 14H

SHL 14H 2155846 DOB: Feb 3/20

SIX MILE COMPLETE 244B
 S: DFCC 244B FLO RIDER 22F
 DFCC 9194 LIBBY 13Z
 SCC BANDO 45A
 D: STANDARD HILL ANN 336F
 STANDARD HILL ANN 350D

CONNELLY COMPLETE 8454
 SIX MILE QUEEN MOTHER 849U
 SOO LINE KODIAK 9194
 LODGE DUCHESS 42T
 LLB 184S BANDO 502X
 SCC PRIDE 31X
 MINBURN QUANTUM 55Y
 STANDARD HILL LADY ANN 117X

bw: 86 ww(adj): 638 yw(adj): 1067 Dec 22: 945

Strong topped bull with calving ease. 14H is a hairy Flo Rider son off a first calf heifer. He has a wide top that was a pleasure to clip. His young dam goes back to Major 350C's dam with a shot of Quantum 55Y and Bando 45A thrown in. Lots of maternal potential here. I would consider him an option on heifers.

YEARLING BLACK ANGUS BULL

EPDS CE 8.0 BW -2.4 WW 41 YW 66 SC ---- MCE 8.5 MILK 24

LOT 25



STANDARD HILL DISPUTE 67H

SHL 67H 2149209 DOB: Feb 5/20

HF JUNCTION 18B
 S: BELVIN DISPUTE 6125
 BARBARA OF RING CREEK 65Y
 HF TIGER 5T
 D: STANDARD HILL LADY ANN 79Y
 STANDARD HILL LADY ANN 28U

YOUNG DALE YOHANN 39Y
 HF ELSIEMERE 106W
 RING CREEK BARDOLINE 69W
 BARBARA OF RING CREEK 31W
 HF KODIAK 5R
 HF ECHO 84R
 SCA 3299 OF IDEAL 1418
 STANDARD HILL LADY ANN 35N

bw: 87 ww(adj): 677 yw(adj): 1056 Dec 22: 950

Power from muscle to maternal. 67H is bulging with muscle. He has a wide top and a well defined rear quarter. His Tiger dam is elite since 2018. Her first calf has produced a herdsire for Brad Kinar of Aberdeen, SK, while her second calf went to the Rue family at Irma, AB where we have sourced some fine open heifers.

YEARLING BLACK ANGUS BULL

EPDS CE 1.5 BW 1.1 WW 52 YW 83 SC 0.47 MCE 4.5 MILK 25

LOT 26



STANDARD HILL DISPUTE 88H

SHL 88H 2149231 DOB: Feb 5/20
 HF JUNCTION 18B
 S: BELVIN DISPUTE 6125
 BARBARA OF RING CREEK 65Y
 B P F SPECIAL FOCUS 504
 D: STANDARD HILL ANN 382C
 STANDARD HILL ANN 367A
 YOUNG DALE YOHANN 39Y
 HF ELSIEMERE 106W
 RING CREEK BARDOLENE 69W
 BARBARA OF RING CREEK 31W
 MYTTY IN FOCUS
 B P F BLACK CASH 341
 S A V FINAL ANSWER 0035
 STANDARD HILL LADY ANN 79Y
 bw: 99 ww(adj): 776 yw(adj): 1306 Dec 22: 1160



Shapely in top and rear quarter. 88H is the most powerful yearling bull in the offering from a red meat and growth perspective. He is currently the heaviest and largest frame score bull in the pen. His epds for ww and yw are top 10 & 25%. His dam is down the line from the dam of lot 25. Maternal power in the pedigree.

YEARLING BLACK ANGUS BULL

EPDS CE 6.0 BW 2.1 WW 62 YW 98 SC 0.75 MCE 8.5 MILK 26

LOT 27



STANDARD HILL MAJOR 91H

SHL 91H 2149233 DOB: Feb 5/20
 CVC SETTLER 004X
 S: STANDARD HILL MAJOR 350C
 STANDARD HILL LADY ANN 117X
 EARLY SUNSET FREEDOM 89U
 D: STANDARD HILL ANN 490C
 STANDARD HILL LADY ANN 6S
 S A V PIONEER 7301
 G V C FRONTIER LADY 272M
 LLB 557S TRADITION 181U
 STANDARD HILL LADY ANN 41R
 PSF FREEDOM 12S
 ROSE HILL MISS DAWN 31Z
 K G POWER DESIGN
 STANDARD HILL LADY ANN 23P
 bw: 101 ww(adj): 702 yw(adj): 1215 Dec 22: 1075



Style and power on display. 91H is a topper for eye appeal. He profiles well with a straight top, long body, extended neck, deep rib, and a rounded rear quarter. From behind his muscle definition and depth continues to impress. His dam has raised a bull sold to Scallywag Farms at Cut Knife, SK and the dam of lot 20.

YEARLING BLACK ANGUS BULL

EPDS CE 3.0 BW 2.4 WW 41 YW 79 SC 0.35 MCE 8.5 MILK 30

LOT 28



STANDARD HILL DISPUTE 23H

SHL 23H 2149267 DOB: Feb 8/20
 HF JUNCTION 18B
 S: BELVIN DISPUTE 6125
 BARBARA OF RING CREEK 65Y
 SCC BANDO 45A
 D: STANDARD HILL QUEENY 351E
 STANDARD HILL QUEENY 2Y
 YOUNG DALE YOHANN 39Y
 HF ELSIEMERE 106W
 RING CREEK BARDOLENE 69W
 BARBARA OF RING CREEK 31W
 LLB 184S BANDO 502X
 SCC PRIDE 31X
 S A V FINAL ANSWER 0035
 STANDARD HILL QUEEN MOTHER 31W
 bw: 86 ww(adj): 697 yw(adj): 1066 Dec 22: 955



Growth in an attractive package. 23H is the second calf off a fine young Bando daughter that I already consider a top cow in the herd. Her first calf sold last year to Burt Boldt of Glenbush, SK. This year's edition has a high ceiling for growth with respectable epds for ww and yw. He is level in his lines and smooth.

YEARLING BLACK ANGUS BULL

EPDS CE 0.0 BW 2.7 WW 58 YW 88 SC 0.61 MCE 7.0 MILK 19

LOT 29



STANDARD HILL MAJOR 18H

SHL 18H 2149266 DOB: Feb 11/20

GVC SETTLER 004X S A V PIONEER 7301
 S: STANDARD HILL MAJOR 350C G V C FRONTIER LADY 272M
 STANDARD HILL LADY ANN 117X LLB 557S TRADITION 181U
 STANDARD HILL LADY ANN 41R
 SCC BANDO 45A LLB 184S BANDO 502X
 D: STANDARD HILL ANN 339E SCC PRIDE 31X
 STANDARD HILL LADY ANN 20X S A V BISMARK 5682
 STANDARD HILL LADY ANN 33T

bw: 88 ww(adj): 690 yw(adj): 1163 Dec 22: 1015



MATERNAL SIB

Ripper off a second calver. 18H is long, deep and muscular. He is soft made and has a good haircoat. His Bando momma is another good one, lots of capacity from length and depth and a quality udder. Her first calf was a high selling heifer in last year's sale to Wayne Bone of Paynton, SK.

YEARLING BLACK ANGUS BULL

EPDS CE 2.0 BW 1.7 WW 50 YW 88 SC ----- MCE 8.5 MILK 15

FUTURE Sire



STANDARD HILL LIVESTOCK

BLACK ANGUS

BEAR CREEK STONEY 32F

Stoney walked our pastures for the first time in 2020. We purchased this Stoney Creek x Density two year old from Bear Creek Angus, the Weiss family, Piapot, SK. Our ties to Weiss' go back to the beginning of our Angus journey and before when they were buying Standard Hill bulls from Les and Ethel. 32F was 42 cm and 2020 lbs at 23 months of age. We were impressed with the SSA 4336 Density 26T females when we toured and were pleased to add this Merit Stoney Creek 4023 son to the program. Chad praises 4023 for his females, consistency, hair, and body dimension. Density females need no intro to Angus folks.



SIRE



DAM

FUTURE Sire



STANDARD HILL LIVESTOCK & MG ANGUS

BLACK ANGUS

LKR HOME RUN 27G

We first spied this Border Butte Federation 224E son when he was a member of the 2019 Agribition Bull Pen Alley Champion Pen of Three bulls for Lucas and Kayla Frey of Oxbox, SK. We followed him along through the Saskatchewan Angus Sweepstakes and were able to purchase him in their horserace sale along with MG Angus. We love his rib shape and depth. He has natural thickness and herd bull presence. The kids love how quiet he is. He is currently in the top 8 and 6 percent of the breed for ww and yw. We are expecting 22 calves sired by him in 2021 and are excited for the mating outcomes.



LONG YEARLING



SIRE



Michael & Jeanette Gerlinsky
Rylen and Nevan

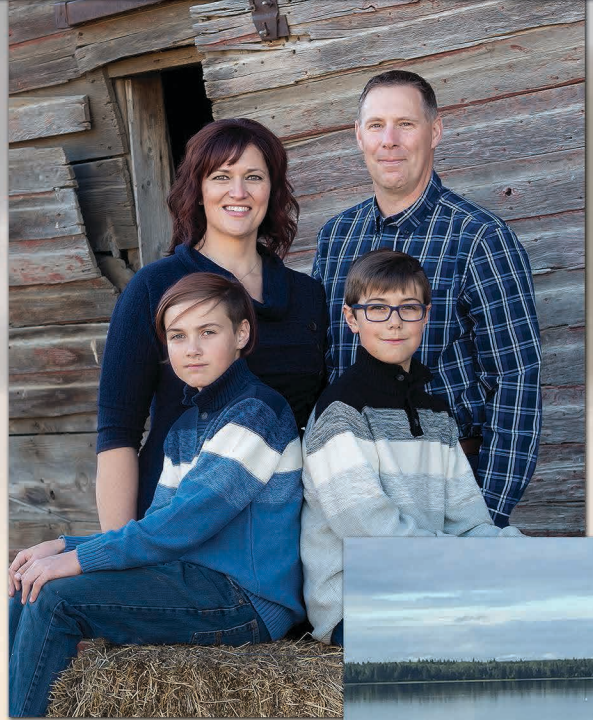
Box 2765 Lloydminster, SK S9V 0Z1
Ph) 306-821-6446 mgangus1@gmail.com

Welcome to the 2021 Standard Hill Connection Sale. We want to thank Stephen and Brennan and families for inviting us to join them at their annual sale.

We have been quietly building a small herd of Purebred and Commercial Angus cows while partnering with Stephen on herd bulls like Belvin Dispute 125D and LKR Homerun 27G. Our cattle are managed by Stephen and Christine and run together in the pastures and the corrals. Therefore the bulls we are offering fit right in with the bulls at Standard Hill.

Our focus on building a cow herd has been on calving ease, maternal strength, udder quality, and docility. We believe the bulls we are offering carry those traits with some performance. We stand behind these bulls 100% and encourage anyone that is interested or has questions to come look at the cattle on the farm at Myer's or give Mike a call at 306-821-6446.

We want to thank our past buyers for their support and trust in our program. Hope we will be able to see everyone on Friday March 12, 2021.



YEARLING BLACK ANGUS BULL

MGA DISPUTE 217H

MGA 217H 2171157 DOB: Jan 29/20

HF JUNCTION 18B

YOUNG DALE YOHANN 39Y

S: BELVIN DISPUTE 6125

HF ELSIEMERE 106W

BARBARA OF RING CREEK 65Y

RING CREEK BARDOLENE 69W

BARBARA OF RING CREEK 31W

STANDARD HILL WISEMAN 41W

SINCLAIR RITO LEGACY 3R9

D: STANDARD HILL ROXY 308D

STANDARD HILL LADY ANN 24G

STANDARD HILL BLACKBIRD 54T

BASIN RAINMAKER 814Z

STANDARD HILL BLACKBIRD 63P

bw: 89 ww(adj): 753 yw(adj): 1224 Dec 22: 1115

217H is a very complete bull sired by Belvin Dispute 125D. He has very correct feet and structure with excellent muscle expression, performance, lots of hair and a clean sheath. We purchased his dam 308D from Myers @ the Fall Fusion sale in 2016. She has been a great addition to our herd with her extra length of body, spring of rib, udder structure, teat placement, and disposition. We have a full sister to 217H that is going to calve this spring. I believe 217H will add pounds to his calf crop at weaning time.

PE EPDS CE -2.5 BW 2.3 WW 49 YW 74 SC 0.51 MILK 22

LOT 31



YEARLING BLACK ANGUS BULL

MGA DISPUTE 219H

MGA 219H 2171158 DOB: Jan 30/20

HF JUNCTION 18B
 S: BELVIN DISPUTE 6125
 BARBARA OF RING CREEK 65Y
 STANDARD HILL BENGAL 308C
 D: STANDARD HILL RAVEN 301E
 STANDARD HILL RAVEN 310C

YOUNG DALE YOHANN 39Y
 HF ELSIEMERE 106W
 RING CREEK BARDOLINE 69W
 BARBARA OF RING CREEK 31W
 STANDARD HILL BENGAL 497A
 STANDARD HILL BLACKBIRD 54T
 EARLY SUNSET FREEDOM 89U
 STANDARD HILL BLACKBIRD 10U

bw: 92 ww(adj): 685 yw(adj): 1144 Dec 22: 1035



SIRE

219H is sired by Belvin Dispute 125D. He has a good set of feet, lots of hair, a clean sheath, and performance. We purchased his dam from the Myers in this very sale in 2018. She is moderate framed with a good udder. The Dispute sons have been well received by previous buyers and these two yearlings could possibly be the best we have raised.

PE EPDS CE 3.5 BW 0.3 WW 40 YW 57 SC 0.66 MILK 24

LOT 32



TWO-YEAR OLD BLACK ANGUS BULL

MGA DISPUTE 211G

MGA 211G 2108928 DOB: Mar 11/19

HF JUNCTION 18B
 S: BELVIN DISPUTE 6125
 BARBARA OF RING CREEK 65Y
 RED STOREBO T N T 56X
 D: MGA JESTRESS 40B
 JUSTAMERE 1036 JESTRESS 713W

YOUNG DALE YOHANN 39Y
 HF ELSIEMERE 106W
 RING CREEK BARDOLINE 69W
 BARBARA OF RING CREEK 31W
 RED BROX T N T 3T
 RED 30 SOAPY 58S
 EXAR KING 1036
 MGA JESTRESS 23N

bw: 90 ww(adj): 831 yw(adj): 1285 Dec 24: 1880

211G is a halter broke, quiet 2 year old sired by Belvin Dispute 125D. He has massive rib shape with excellent performance and a smooth shoulder all wrapped in an eye appealing package. His mother is larger framed with an excellent udder. These 2 year olds are athletic and will be able to service a number of females.

EPDS CE -- BW -- WW -- YW -- SC -- MILK --

LOT 33



TWO-YEAR OLD BLACK ANGUS BULL

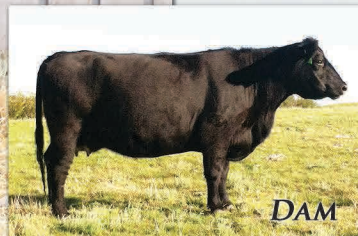
MGA BENGAL 203G

MGA 203G 2109813 DOB: Apr 13/19

HT TIGER 5T
 S: STANDARD HILL BENGAL 479A
 STANDARD HILL LADY ANN 23P
 ELLIOT SAM 4S
 D: MGA BLACK VELVET 102U
 MGA BLACK VELVET 1P

HF KODIAK 5R
 HF ECHO 84R
 R R 9440 SCOTCH CAP 1483
 STANDARD HILL LADY 44G
 F A R KRUGERRAND 410H
 ELLIOT JENNIFER 8P
 VERMILLION DATELINE 7078
 LAZY J BLACK VELVET 4C

bw: 95 ww(adj): 696 yw(adj): 1129 Dec 20: 1700



DAM

203G is sired by Standard Hill Bengal 479A and out of a Krugerrand 410H granddaughter. 203G grandmother 1P passed away this past fall at 16 years of age. 102U has an excellent udder and has great capacity. 203G has a balance of performance and maternal traits with a good set of feet. We sold a maternal brother to Movin On Farms at Pride of the Prairies in Lloyd in 2016.

EPDS CE -- BW -- WW -- YW -- SC -- MILK --

LOT 34



TWO-YEAR OLD F1 HEREFORD X ANGUS BULL

SHL FRED 70G

SHL 70G F1 cross DOB: Apr 14/19

SCC BANDO 45A	LLB 1845 BANO 502X
S: STANDARD HILL BANDO 354D	SCC PRIDE 31X
STANDARD HILL BLACKBIRD 6Y	S A V FINAL ANSWER 0035
GHC QUIGLEY 20B	STANDARD HILL BLACKBIRD 78W
D: STANDARD-HILL 20B INDIGO 74D	SHF MOORE R117 Z40
STANDARD-HILL INDIGO 192B	GHC MISS KAREN 141U
	TALECO SIMON 12U
	BIG-GULLY 517U INDIGO 121Y

bw: 78 ww(adj): 677 yw(adj): 979 Dec 20: 1625

Moderate framed, full of muscle, should work on heifers.



DAM



SIRE

LOT 35



TWO-YEAR OLD F1 ANGUS X HEREFORD BULL

SHL GRAM 344G

SHL 344G F1 cross DOB: Apr 16/19

CHSF 52U BRIAN 5Y	GHC-TABOO COALITION 52U
S: CHSF 5Y DEALER 13D	DXB 71N KITTIE 44S
CHSF 7W ROSE 22A	HARVIE TAYLOR MADE ET 7W
G A R PREDESTINED	CHSF 54L ROSE ET 8R
D: STANDARD HILL LASSIE 51X	B/R NEW DESIGN 036
STANDARD HILL LASSIE 26L	G A R EXT 4206
	RR TRAVELER 5204
	STANDARD HILL LASSIE 17F

bw: 91 ww(adj): 826 yw(adj): 1127 Dec 20: 1790

Larger framed, performance bull with lots of spine.



SIRE



MATERNAL GRANDSIRE

LOT 36



TWO-YEAR OLD F1 ANGUS X HEREFORD BULL

SHL LARRY 353G

SHL 353G F1 cross DOB: Apr 21/19

CHSF 52U BRIAN 5Y	GHC-TABOO COALITION 52U
S: CHSF 5Y DEALER 13D	DXB 71N KITTIE 44S
CHSF 7W ROSE 22A	HARVIE TAYLOR MADE ET 7W
purebred black angus bull	CHSF 54L ROSE ET 8R
D: STANDARD HILL ANN 388D	EARLY SUNSET FREEDOM 89U
STANDARD HILL ANN 492B	STANDARD HILL LADY ANN 19S

bw: 87 ww(adj): 753 yw(adj): 983 Dec 20: 1600

Medium framed bull with style, a dam that has a top calf yearly.



SIRE



MATERNAL SIBLING

REF
Sire



STANDARD HILL LIVESTOCK

POLLED HEREFORD

CHSF 5Y DEALER 13D

Dealer was purchased by private treaty as a calf from Chestermere Hereford Stock Farms at Didsbury, AB. When we toured the herd we took the largest interest in the Bricker's Brian 5Y herdsire, and thus we bought a son of his. Dealer is long spined, muscular, level in his lines, and clean fronted with a good head. His mother is a moderate framed, well pigmented, Tailor Made daughter with a picture perfect udder. Dealer was a prolific breeder and his females are just coming on line now and doing well for us.



SON



DAUGHTER

REF
Sire



STANDARD HILL LIVESTOCK

POLLED HEREFORD

MCCOY 53A MAGNET 109E

Magnet 109E was purchased from the McCoy/Beck Bull Sale in 2018. He is a homozygous polled son of their Skyfall 53A herdsire. 53A has bred well for them and has sired a large number of retained females. His dam is a flush cow at MCC and they have also retained a son of hers, McCoy 719T Matrix ET 30E, for their own use. Magnet has been used on our heifers and cows, yielding eye appealing, long bodied, strong topped progeny with generally a lot of pigment. We look forward to a large group of his females calving in 2022.



DAM



SUMMER
2019

REF
Sire



STANDARD HILL LIVESTOCK

POLLED HEREFORD

MCCOY 8Y MAVERICK 25E

Maverick 25E was the leadoff bull in the McCoy/Beck Bull Sale in 2018. He is a heterozygous polled son of NJW 73S W18 Homegrown 8Y ET, who is an epd trait leader for calving ease, milk, and ribeye area among others. He is free of Mandibulofacial Dysostosis. His dam is an Equity 70Y daughter that Chad talks very highly of. Maverick has a moderate frame score, wide top, great hip and loads of muscle. His first daughters are calving now and he's proving to be a good investment.



SON



DAUGHTER

REF
Sire



STANDARD-HILL MATER 82F

Home grown bull of Jayce's. This guy is sired by TCF 305A Stacked 609D, which we selected as a calf from the Reid's and he went on to be a class winner at Agribition. His dam is a Pat 7S daughter that has had many high sellers. 82F is soggy, well marked, and muscular. His females promise to have loads of milk and we anticipate some enhanced growth numbers from that and an increase in frame size. A limited amount of progeny in this year's sale, but there will be more selection of two-year olds sired by him next year.



DAM



SIRE

STANDARD HILL LIVESTOCK

POLLED HEREFORD

LOT
37



STANDARD-HILL GAMBLER 49G

SHL 49G C03059876 DOB: Feb 1/19

CHSF 52U BRIAN 5Y
S: CHSF 5Y DEALER 13D
CHSF 7W ROSE 22A

GHC-CT-GUARDIAN 40X
D: SHPH 40X CHELAN 46Z
SHPH 15U CHELAN 33X

GHC-TABOO COALITION 52U
DXB 71N KITTIE 44S
HARVIE TAYLOR MADE ET 7W
CHSF 54L ROSE ET 8R

MCCOY 47N THROTTLE 98S
GHC MISS LASSIE 14M
HI-CLIFFE 38S UMPIRE 15U
SHPH 29R IVY 16T

bw: 97 ww(adj): 729 yw(adj): 1083 Dec 24: 1760



DAM

Gambler 49G has a herd bull presence to him. He is muscular and smooth with excellent length of spine and depth or rib. His masculine traits and strong libido should make him a great breeder. His dam was a large bodied, heavy milking cow that was always a consistent producer. We used a maternal sibling for ourselves.

TWO-YEAR OLD POLLED HEREFORD BULL

EPDS CE 0.2 BW 2.4 WW 50.9 YW 79.9 MILK 20.4 TM 45.9 MCE 5.2 SC 0.3

LOT
38



STANDARD-HILL MATER 18G

SHL 18G C03059953 DOB: Feb 4/19

MCCOY 70Y SKYFALL 53A
S: MCCOY 53A MAGNET 109E
MCCOY P20 ZENA 1B

BARE MR YOU TUBE 4Y
D: STANDARD-HILL 4Y IRIS 22E
SHPH 62T IRIS 16W

JDH 117R EQUITY 70Y ET
MCCOY 25M ALISON 64W
SHF PROGRESS P20
MCCOY 23U ZENA 142Z

NCX WINCHESTER 745W
NCX MISS WHIPLASH 3W
SHPH 63N CANNON 62T
SHPH 10M HELENA 26R

bw: 78 ww(adj): 709 yw(adj): 1054 Dec 24: 1530



GRP

MATERNAL
GRANDSIRE

Mater 18G is designed for use on heifers for sleep easy calving. Both his sire and maternal grandsire have been used on heifers here at Standard Hill. He is top 5% for the breed in calving ease and birth weight. He is the first calf off a sweet uddered cow of Jayce's.

TWO-YEAR OLD POLLED HEREFORD BULL

EPDS CE 11.7 BW -1.0 WW 36.3 YW 60.8 MILK 22.1 TM 40.3 MCE 7.2 SC 1.1

LOT 39



STANDARD-HILL THUNDER 43G

SHL 43G C03059925 DOB: Feb 9/19

NJW 73S W18 HOMEGROWN 8Y ET SHF WONDER M326 W18 ET
 S: MCCOY 8Y MAVERICK 25E NJW P606 72N DAYDREAM 73S
 MCCOY 70Y CONNIE 87A JDH 117R EQUITY 70Y ET
 MCCOY 30N CONNIE 3W
 STANDARD-HILL 70Y ASSASIN 84A SHPH 7S DOMINATOR 70Y
 D: STANDARD-HILL PEARL 64C SHPH 6U KAREN 109X
 SHPH 63N CANNON 62T
 SHPH 22E PAULINE 27K

bw: 86 ww(adj): 718 yw(adj): 1055 Dec 24: 1725



Thunder 43G has been a favourite in the pen from early on. He is moderate and thick with a youthful dam that has the phenotype to last many years. We seriously considered keeping this guy, but his sire is still going strong. A full sibling is Lot 52.

DAM

TWO-YEAR OLD POLLED HEREFORD BULL

EPDS CE 5.3 BW 1.1 WW 39.8 YW 65.9 MILK 25.2 TM 45.1 MCE 3.7 SC 0.9

LOT 40



STANDARD-HILL DEALER 120G

SHL 120G C03059945 DOB: Feb 11/19

CHSF 52U BRIAN 5Y GHC-TABOO COALITION 52U
 S: CHSF 5Y DEALER 13D DXB 71N KITTIE 44S
 HARVIE TAYLOR MADE ET 7W
 CHSF 7W ROSE 22A CHSF 54L ROSE ET 8R
 NJW 144Y 174X DIABLO 180A NJW 76S 4037 DURANGO SPIRIT 174X
 D: WCC 180A SPIRIT QUEEN 6437D NJW 69S 38W BEEFY ANGIE 144Y
 WCC MISS MISSISSIPPI 437B GRANDVIEW CMR MR DOM 86P Y332
 SQUARE-D MAID 5037X

bw: 76 ww(adj): 646 yw(adj): 929 Dec 24: 1590



Dealer 120G is a heifer bull with lots of libido. He is smooth shouldered, well marked, and level made. His dam is a favourite from a large group of heifers we purchased from Wascanna Cattle Company as bred females in 2017. She has a great udder with tight attachment and small teat size.

MATERNAL GRANDSIRE

TWO-YEAR OLD POLLED HEREFORD BULL

EPDS CE 7.3 BW -0.3 WW 45.3 YW 64.5 MILK 18.9 TM 41.6 MCE 11.3 SC 0.7

LOT 41



STANDARD-HILL DEALER 54G

SHL 54G C03059916 DOB: Mar 1/19

CHSF 52U BRIAN 5Y GHC-TABOO COALITION 52U
 S: CHSF 5Y DEALER 13D DXB 71N KITTIE 44S
 HARVIE TAYLOR MADE ET 7W
 CHSF 7W ROSE 22A CHSF 54L ROSE ET 8R
 SHPH 7S DIEHARD 136Y SQUARE-D PAT 2N7S
 D: STANDARD-HILL VIVIAN 114B SHPH 8M DEANA 130T
 SHPH 68L ARISTOCRAT 63N
 SHPH 63N VIVIAN 114T SHPH 190J PRIME VECTOR 114L

bw: 100 ww(adj): 657 yw(adj): 967 Dec 24: 1500



Dealer 54G is a moderate framed, smooth made individual with maternal quality packed in his pedigree. His dam 114B is a consistent producer just coming into her prime. There is tremendous udder quality and milk potential from both side of 54G's pedigree. A maternal sibling sells as Lot 49 in this years offering.

DAM

TWO-YEAR OLD POLLED HEREFORD BULL

EPDS CE 0.0 BW 4.1 WW 55.2 YW 84.3 MILK 15.6 TM 43.2 MCE 3.9 SC 0.8

LOT 42



STANDARD-HILL MATER 82G

SHL 82G C03059870 DOB: Mar 9/19

CHSF 52U BRIAN 5Y
S: CHSF 5Y DEALER 13D
CHSF 7W ROSE 22A

GHC-TABOO COALITION 52U
DXB 71N KITTIE 44S
HARVIE TAYLOR MADE ET 7W
CHSF 54L ROSE ET 8R
WILGOR 55K NORTHEASTERN OL 2N
PLAIN LAKE 12E 1K PATRICIA 7P
SHPH 63N CANNON 62T
SHPH 10M HELENA 26R

SQUARE-D PAT 2N 7S
D: SHPH 7S IRIS 22Y
SHPH 62T IRIS 16W

bw: 92 ww(adj): 695 yw(adj): 1011 Dec 24: 1785

Mater 82G is a complete bull with lots of growth and maternal potential. One of the largest Hereford bulls in the pen he impresses with his muscling, length of body, width, and depth. His Pat 7S dam will pass nicely made udders on through him, and the Dealer females, 82G's paternal siblings, have had just as good of udders so far.

TWO-YEAR OLD POLLED HEREFORD BULL

EPDS CE 7.9 BW 2.0 WW 50.8 YW 80.8 MILK 14.2 TM 39.6 MCE 4.1 SC 0.9

LOT 43



STANDARD-HILL MAVRICK 45G

SHL 45G C03059958 DOB: Apr 14/19

NJW 73S W18 HOMEGROWN 8Y ET
S: MCCOY 8Y MAVERICK 25E
MCCOY 70Y CONNIE 87A

SHF WONDER M326 W18 ET
NJW P606 72N DAYDREAM 73S
JDH 117R EQUITY 70Y ET
MCCOY 30N CONNIE 3W

STANDARD-HILL HARLAN 15B
D: STANDARD-HILL 15B JANNA 103E
SHPH 5X JANNA 110Z

FCC 2U HARLAN 7Y
MHFM MISS NED 806H 603S
CLAYRIDGE HEMI 5X
TALECO 13R JANNA 37U

bw: 85 ww(adj): 597 yw(adj): 934 Dec 24: 1535

Mavrick 45G is a smooth made level bodied option for heifers. His dark colour and short markings make him attractive and a good option to make some brockle faced calves. His mother's cow line, the Jannas, has possessed some of the best udders in the herd for a number of years.

TWO-YEAR OLD POLLED HEREFORD BULL

EPDS CE 4.2 BW 2.7 WW 39.2 YW 67.0 MILK 22.2 TM 41.8 MCE 3.9 SC 1.3

LOT 44



STANDARD-HILL MATER 23G

SHL 23G C03059914 DOB: Apr 25/19

NJW 73S W18 HOMEGROWN 8Y ET
S: MCCOY 8Y MAVERICK 25E
MCCOY 70Y CONNIE 87A

SHF WONDER M326 W18 ET
NJW P606 72N DAYDREAM 73S
JDH 117R EQUITY 70Y ET
MCCOY 30N CONNIE 3W

GHC-CT-GUARDIAN 40X
D: STANDARD-HILL 40X IRIS 82A
SHPH 7S IRIS 22Y

MCCOY 47N THROTTLE 98S
GHC MISS LASSIE 14M
SQUARE-D PAT 2N 7S
SHPH 62T IRIS 16W

bw: 90 ww(adj): 653 yw(adj): 1058 Dec 24: 1640

Mater 23G is a soggy made, moderate framed, long bodied bull that has a lot of dark red pigment, and a lot of testicle. His dam brings in one of the heavier calves from our spring program every year. 23G has potential to work on heifers according to his epds, but I would try him on young cows or larger heifers for a trial run.

TWO-YEAR OLD POLLED HEREFORD BULL

EPDS CE 10.1 BW 1.0 WW 40.5 YW 76.4 MILK 25.8 TM 46.1 MCE 4.2 SC 1.6

LOT

45



STANDARD-HILL MAVRICK 47G

SHL 47G C03059959 DOB: Apr 29/19

NJW 73S W18 HOMEGROWN 8Y ET SHF WONDER M326 W18 ET
 S: MCCOY 8Y MAVERICK 25E NJW P606 72N DAYDREAM 73S
 MCCOY 70Y CONNIE 87A JDH 117R EQUITY 70Y ET
 MCCOY 30N CONNIE 3W
 STANDARD-HILL HARLAN 15B FCC 2U HARLAN 7Y
 D: STANDARD-HILL 15B CHELAN 105E MHFM MISS NED 806H 603S
 SHPH 28U IVY 33Y SHPH 2N BEEFMAN 28U
 SHPH 29R IVY 16T

bw: 96 ww(adj): 668 yw(adj): 1048 Dec 24: 1520



Mavrick 47G is marked up the way most like them today. His maternal line packs a little punch in the growth department. His Maternal Grandsire, 15B, was used for his pigment, muscle, length of body, and the longevity and udder quality of his dam. I'm very confident you'll want to keep some females off this guy.

TWO-YEAR OLD POLLED HEREFORD BULL

EPDS CE 2.5 BW 4.5 WW 51.7 YW 92.0 MILK 28.1 TM 54.0 MCE 2.4 SC 1.1

LOT

46



STANDARD-HILL MATER 22G

SHL 22G C03059865 DOB: May 19/19

TCF JVJ 11X THE GOODS 305A TH 71U 719T MR HEREFORD 11X
 S: TCF 305A STACKED 609D JVJ 18L MISS BOOMER 9Y
 GHC MISS DEW 185U GHC VOLUME III ET 139S
 WR LADY VICTOR 121P 0611
 SHPH 63N CANNON 62T SHPH 68L ARISTOCRAT 63N
 D: SHPH 62T IRIS 16W SHPH 236G FAIRY 8L
 SHPH 10M HELENA 26R SHPH 28J LAREDO 10M
 SQUARE-D CHELAN 979G

bw: 92 ww(adj): 600 yw(adj): 1018 Dec 24: 1560



This is the 4th Mater in this year's Hereford offering. All of them go back to Jayce's first cow, Iris 16W, the dam of Mater 22G. She has done well for the boy, producing a multitude of quality females and bulls over the years. We even sold a few of her heifers and still her family has thrived. 22G is moderate, marked right and has some growth.

TWO-YEAR OLD POLLED HEREFORD BULL

EPDS CE 8.2 BW 1.6 WW 45.1 YW 83.5 MILK 24.8 TM 47.4 MCE 4.6 SC 0.6

FUTURE

Sire WCC 4520B 180A KRACKER 4520G



Purchased as a calf for the Wascanna dispersal, I couldn't help but take a chance on this guy, buying him sight unseen. He has tremendous growth potential, and muscular design, and is backed by a sweet uddered cow that went to Ned and Jan Ward in the same sale.

STANDARD HILL LIVESTOCK

POLLED HEREFORD

FUTURE

Sire STANDARD-HILL ACE 96F



Ace was a standout as an April born calf. His dam is a Pat 7S daughter that I really should flush. With the growth potential from his sire, the maternal power of his dam, and his own actual stats and phenotype we are very excited about his future. His first calves have landed now.

STANDARD HILL LIVESTOCK

POLLED HEREFORD

LOT

47



STANDARD-HILL MAVERICK 175H

SHL 175H C03071138 DOB: Jan 20/20

NJW 73S W18 HOMEGROWN 8Y ET SHF WONDER M326 W18 ET
 S: MCCOY 8Y MAVERICK 25E NJW P606 72N DAYDREAM 73S
 MCCOY 70Y CONNIE 87A JDH 117R EQUITY 70Y ET
 MCCOY 30N CONNIE 3W
 BARE MR YOU TUBE 4Y NCX WINCHESTER 745W
 D: STANDARD-HILL MIRAGE 274B NCX MISS WHIPLASH 3W
 SHPH 127S MIRAGE 43U SHPH 10M FREE STYLE 127S
 TCK MISS NATIONAL APRIL 88P

bw: 87 ww(adj): 563 yw(adj): 1020 Dec 22: 940



DAM

If you like them moderate, marked up and thick this guy should excite. He will never be large in stature, but like his mother he will be easy fleshing and abundant in rib depth. She is 1800+ lbs and possesses a great udder. I would have no qualm with using 175H on my heifers. If we didn't have his sire still working, we'd retain him.

YEARLING POLLED HEREFORD BULL

EPDS CE 9.5 BW 0.0 WW 31.6 YW 58.4 MILK 20.9 TM 36.7 MCE 6.2 SC 0.7

LOT

48

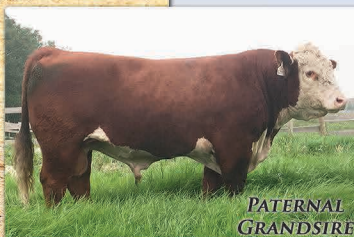


STANDARD-HILL DJD VECTOR 112H

SHL 112H C03071166 DOB: Jan 31/20

MCCOY 70Y SKYFALL 53A JDH 117R EQUITY 70Y ET
 S: MCCOY 53A MAGNET 109E MCCOY 25M ALISON 64W
 MCCOY P20 ZENA 1B SHF PROGRESS P20
 MCCOY 23U ZENA 142Z
 TCF 305A STACKED 609D TCF JJJ 11X THE GOODS 305A
 D: STANDARD-HILL DJD VIRGINIA 1F GHC MISS DEW 185U
 STANDARD-HILL VIRGINIA 3C SHPH 7S DOMINATOR 70Y
 SHPH 41R APHRODITE 1W

bw: 78 ww(adj): 640 yw(adj): 990 Dec 22: 895



PATERNAL GRANDSIRE

Marked up bull off a first calver that should be great on heifers. 112H is attractive in his makeup, he is level in his lines, smooth bodied, and sound. Even with his calving ease, he has some decent shape to his rear quarter. His dam has a lot of milk and is very feminine. Owned with our friends Danny and June Dodsworth.

YEARLING POLLED HEREFORD BULL

EPDS CE 10.3 BW -1.0 WW 39.2 YW 61.3 MILK 22.9 TM 42.5 MCE 4.2 SC 0.8

LOT

49



STANDARD-HILL VECTOR 154H

SHL 154H C03071136 DOB: Feb 2/20

MCCOY 70Y SKYFALL 53A JDH 117R EQUITY 70Y ET
 S: MCCOY 53A MAGNET 109E MCCOY 25M ALISON 64W
 MCCOY P20 ZENA 1B SHF PROGRESS P20
 MCCOY 23U ZENA 142Z
 SHPH 7S DIEHARD 136Y SQUARE-D PAT 2N 7S
 D: STANDARD-HILL VIVIAN 114B SHPH 8M DEANA 130T
 SHPH 63N VIVIAN 114T SHPH 68L ARISTOCRAT 63N
 SHPH 190J PRIME VECTOR 114L

bw: 97 ww(adj): 652 yw(adj): 1067 Dec 22: 960



DAM

This guy catches your eye when you enter the pen. He is level in his lines, smooth made, marked well, and good headed. His dam is a consistent producer of progeny with above average growth. She is a grand daughter of Square-D Pat, one of the bulls that gave us Angus quality udders in our Hereford herd.

YEARLING POLLED HEREFORD BULL

EPDS CE 4.8 BW 2.5 WW 42.7 YW 68.6 MILK 22.3 TM 43.7 MCE 2.8 SC 1.2

LOT

50



STANDARD-HILL STACKED 100H

SHL 100H C03071153 DOB: Feb 4/20

TCF 305A STACKED 609D
S: STANDARD-HILL MATER 82F
SHPH 7S IRIS 22Y

TCF JVJ 11X THE GOODS 305A
GHC MISS DEW 185U
SQUARE-D PAT 2N 7S
SHPH 62T IRIS 16W

GRANDVIEW CMR MR DOM 86P Y332
D: WCC MISS MISSISSIPPI 619D
BAR-J-M TANYA 19T

MCR ILR DOMINO 86P
GRANDVIEW CMR LADY ONLINE 9013ET
BAR-J-M ROCKY 120L
MOOREHAVEN DELIA NELL 122L 15N

bw: 93 ww(adj): 652 yw(adj): 1060 Dec 22: 950

Performance bull with lots of hair. This fella has some bone and is fairly well marked up. His Y332 dam is one of a large group of females purchased as breds from Wascanna Cattle Company. The Y332s have been solid for us with udder quality, milk and calf performance. 100H is docile and has good testicle development.

YEARLING POLLED HEREFORD BULL

EPDS CE 2.7 BW 3.1 WW 47.6 YW 77.7 MILK 20.5 TM 44.3 MCE 1.9 SC 1.0

LOT

51



STANDARD-HILL TRACTION 176H

SHL 176H C03071139 DOB: Feb 5/20

R LEADER 6964
S: HAROLDSON'S TRACTION ET 50E
HAROLDSON'S MARVEL 45P 5W

HYALITE ON TARGET 936
R MISS REVOLUTION 1009
NJW FHF 9710 TANK 45P
REMITALL MARVEL 190S

GRANDVIEW CMR MR DOM 86P Y332
D: WCC 332Y ROSY LANE 4294B
SQUARE-D 362W ROSY LANE 1294Y

MCR ILR DOMINO 86P
GRANDVIEW CMR LADY ONLINE 9013ET
STAR TCF TAKE NOTICE 362W ET
SQUARE-D ELLIE 294W

bw: 89 ww(adj): 603 yw(adj): 1013 Dec 22: 900

Heterozygus Polled. 176H was purchased in dam from the Wascanna Herd Dispersal Sale. His horned dam has lots of length, shape, and udder quality. 176H is dark red and lacking only eye pigmentation. He has a great rear quarter, lots of barrel, and is level is his lines stationary and in motion.

YEARLING POLLED HEREFORD BULL

EPDS CE 0.9 BW 3.1 WW 53.0 YW 77.5 MILK 22.4 TM 48.9 MCE 1.5 SC 1.0

LOT

52



STANDARD-HILL STORM 143H

SHL 143H C03071143 DOB: Feb 7/20

NJW 73S W18 HOMEGROWN 8Y ET
S: MCCOY 8Y MAVERICK 25E
MCCOY 70Y CONNIE 87A

SHF WONDER M326 W18 ET
NJW P606 72N DAYDREAM 73S
JDH 117R EQUITY 70Y ET
MCCOY 30N CONNIE 3W

STANDARD-HILL 70Y ASSASIN 84A
D: STANDARD-HILL PEARL 64C
SHPH 62T PAULINE 79X

SHPH 7S DOMINATOR 70Y
SHPH 6U KAREN 109X
SHPH 63N CANNON 62T
SHPH 22E PAULINE 27K

bw: 87 ww(adj): 677 yw(adj): 1076 Dec 22: 960

Muscular bull with lots of pigment and rib. Storm 143H is an option on heifers with good growth potential. His EPDs are in the top 5% for calving ease and 10% for birth weight. He has great testicle development. Full sibling to Lot 39. His dam milks well, and is very youthful and feminine in her design.

YEARLING POLLED HEREFORD BULL

EPDS CE 10.5 BW 1.1 WW 41.0 YW 72.3 MILK 25.6 TM 46.1 MCE 6.3 SC 1.0



Brennan & Taryn Schachtel, Resch & Lyndi
Pius and Theresa Schachtel
Box 421 Marshall, SK S0M 1R0
Ph) 306-821-2504 eyehillb@gmail.com

On behalf of the Schachtel family and Eye Hill Stock Farm we would like to welcome you to the Standard Hill Connection Sale. We are very excited to once again work with the Myer family as well as looking forward to working with the Gerlinsky family. As I look back on this past year amidst all the things we couldn't control, we had a truly blessed year. We were lucky to have great crops, an abundance of feed, extended grazing into fall and a mild winter thus far. Most importantly our kids continue to grow and are involved daily as much as possible; which makes us feel very lucky. This calving season I eagerly look forward to some new exciting AI and ET matings that were done this past spring with our kids helping us by the chutes getting the job done.

This year's bull pen is sure interesting both genetically and in terms of consistency and quality. There is a lot of fresh genetics for repeat customers as well as tried tested proven genetics that just simply work. I think this may be the most complete group of heifer bull options in terms of quality we have offered; that have the ability to cover cows as well. There also is a very strong set of growthy cow bulls. The bulls have been rigorously culled and we are proud of the set we have to offer. Most importantly each bull is backed by a dam that we are proud to own and would love to show you.

The bulls were weaned on Sept. 15 with no creep feed in their development. The bulls are developed on a moderate growing ration to promote longevity and target growth rate from 2.5- 3 lbs/day. The pictures and videos were taken on Jan. 22. Please consider this an invitation to come tour anytime leading up to the sale, we are just a short 15-minute drive east of Lloydminster. If you have any questions feel free to call anytime. Thanks for your interest.

Brennan Schachtel



REF **Sire**



EYE HILL STOCK FARM

RED ANGUS

RED FLYING K ROOSEVELT 46C

Co-owned with ValleyHills Angus. Purchased in 2016 from Flying K Red Angus. 46C has really become an important piece of the puzzle within our breeding program. He sure stamps them in terms of overall shape, correctness, structure, smoothness and their hair coats. Calves that are born extremely easy but really grow afterwards and a large percentage make the keeper pen. Roosevelt is moderate, smooth made, nicely patterned with great dark feet on him. He serviced a large number of cows this year and is built to last showing no signs of slowing down. The daughters we have retained are beautiful uddered with lots of milk. Birthweight average for his progeny is 74lbs.



SON



DAUGHTER

REF **Sire**



EYE HILL STOCK FARM

RED ANGUS

RED EYE HILL BOSS 19F

Co-owned with Collinge Land and Cattle
The Collinges purchased this top seller in the spring of 2019. We were extremely fortunate to keep an interest in him and were able to use him that spring. After losing Boss he was a suitable replacement for his sire, and his dam is one of the best and most productive cows on the farm. He sure hasn't disappointed and his sons have some extra power to them, with length of body and rib shape. Most importantly he passed his excellent feet traits down to his offspring and they check the boxes at this stage in development. A large number of his daughters made the pen and have the look to make very productive cows. Average birth weight 86 lbs on his sire group.



DAM



LOT 57
SON

REF **Sire**



EYE HILL STOCK FARM

RED ANGUS

RED COCKBURN COWBOY KIND 754E

Purchased in the spring of 2018 as one of the feature bulls in the Cockburn/Merit bull Sale. We admired him for his overall growth, rib shape and muscle pattern yet having a moderate birthweight. He also offers a bit of a genetic twist to our program. Most importantly he is backed by one of Cockburn's most productive cows and is always talked about by anyone who has seen her. His sons offer a really quick early growth curve to them while moderating as they mature. We are excited to calve out his daughters as they are extremely broody and have a real maternal look to them. Unfortunately we lost him to a breeding injury this spring so this will be the last offering of his sons. Average birth weight 82 lbs on his sire group.



SON



FULL SIB
TO LOT 58
DAUGHTER

LOT 53



YEARLING RED ANGUS BULL

RED EYE HILL SUPREME 4H

PBS 4H 2169447 DOB: Jan 13/20

RED 5L BOURNE 670-111C
 S: RED SCHULER SUPREMECY 7177E
 RED SOR KARVE ENDURANCE 4205B
 RED RACK BUCC 54C
 D: RED KENRAY ROSE 106F
 RED KENRAY ROSE 14D

RED 5L BOURNE 117-48A
 5L ADINA 2174-670
 RED SCHULER ENDURANCE 2101Z
 RED SOR KARVE PCKR 2625Z
 RED SIX MILE BUCC 324Y
 RED RACK MINNIE 308X
 RED MAR MAC INDICATOR 30Z
 RED KENRAY ROSE 51W

bw: 76 ww (Sep 15): 760 January 3: 1080



Long, dark and smooth would best describe him. He has the ability to work in your heifer pen with some added growth afterwards. He was an in-dam purchase and his mother did an awesome job on her first year of motherhood. Lots of unique genetics on this bull.

EPDS CE 4.0 BW 0.8 WW 37 YW 69 MCE 4.0 MILK 28

LOT 54



YEARLING RED ANGUS BULL

RED EYE HILL ROOSEVELT 7H

PBS 7H 2169449 DOB: Jan 16/20

RED BIEBER ROOSEVELT W384
 S: RED FLYING K ROOSEVELT 46C
 RED FLYING K LANA 185Z
 RED WILBAR DOUBLE TAKE 701C
 D: RED B-ELLE ARROW EXPRESS 753E
 RED B-ELLE YOSHEE ARROW 373A

RED BIEBER ROUGH RIDER 10712
 RED BIEBER SHEBA 9602
 RED BECKTON NEBULA U865
 RED FLYING K LASSIE 114S
 RED BAR-E-L DOUBLE DOUCE 198Y
 RED WILBAR BRNDINA 638S
 RED BAR-E-L SCOUTMASTER 101Y
 RED B-ELLE USHAS YOSHEE 137Y

bw: 92 ww (Sep 15): 765 January 3: 1100

A real standout Roosevelt son. He is extremely correct and built like a brick. He is quickly noticed and is a favourite amongst visitors. His dam is a very powerful easy doing female we purchased a couple years back.

EPDS CE 4.0 BW 1.3 WW 35 YW 59 MCE 3.0 MILK 28

LOT 55



YEARLING RED ANGUS BULL

RED EYE HILL BOSS 9H

PBS 9H applied for DOB: Jan 19/20

RED FLYING K BOSS 95C
 S: RED EYE HILL BOSS 19F
 RED EYE HILL SYRINGA 1439
 RED SSS ENDORSE 639X
 D: RED SPITTBURN SADONA 500C
 RED SPITTBURN SADONA 61X

RED FLYING K MAX 153Y
 RED FLYING K MS.DIADEM 100X
 RED SSS N. KING 652T
 RED BAYSHORE SPICE 126S
 RED T-K ENERGIZER 13T
 RED SSS BELLE 612P
 RED SIX MILE TROY 243T
 RED SHODEREE SADONA 64G

bw: 70 ww (Sep 15): 730 January 3: 1055



A real nicely made Boss grandson that will add some growth and destined to leave some very good replacement daughters. His dam is a hardworking cow that is the right kind. His maternal sister sold this Fall to Stuart Cattle Station. Note: he is a twin I would recommend him for cows.

PE-EPDS CE -0.5 BW 3.3 WW 32 YW 54 MCE 5.0 MILK 21

LOT

56



YEARLING RED ANGUS BULL

EPDS

RED EYE HILL ROOSEVELT 27H

PBS 27H unregistered DOB: Jan 28/20

- | | |
|-------------------------------|------------------------------|
| RED BIEBER ROOSEVELT W384 | RED BIEBER ROUGH RIDER 10712 |
| S: RED FLYING K ROOSEVELT 46C | RED BIEBER SHEBA 9602 |
| RED FLYING K LANA 185Z | RED BECKTON NEBULA U865 |
| | RED FLYING K LASSIE 114S |
| RED MLK CRK LANCER 0119X | RED BUF CRK LANCER F L297 |
| D: RED SYRINGA 1530 | RED MLK CRK EMU MAR 812 |
| RED BAYSHORE SPICE 126S | RED PIRO NEW BRAND 110L |
| | RED GEIS SYRINGA 125'03 |

bw: 78 ww (Sep 15): 745 January 3: 1050

Long, smooth, nicely patterned bull that's destined for the heifer pen. He is out of one of our most prolific cow families, the Syringas. Sells unregistered.

CE --- BW --- WW -- YW -- MCE --- MILK --

LOT

57



YEARLING RED ANGUS BULL

PE-EPDS

RED EYE HILL BOSS 32H

PBS 32H applied for DOB: Jan 30/20

- | | |
|----------------------------|-----------------------------|
| RED FLYING K BOSS 95C | RED FLYING K MAX 153Y |
| S: RED EYE HILL BOSS 19F | RED FLYING K MS.DIADEM 100X |
| RED EYE HILL SYRINGA 1439 | RED SSS N. KING 652T |
| | RED BAYSHORE SPICE 126S |
| RED SSS N. KING 652T | RED 5L NORSEMAN KING 2291 |
| D: RED EYE HILL ELLIE 1425 | CROWFOOT BLACKBIRD 3023N |
| GET-A-LONG ELLIE 178 | RED BAKERS CENTURY |
| | GET-A-LONG ELBA 834 |

bw: 98 ww (Sep 15): 885 January 3: 1220



DAM

This bull really commands the attention whenever he's first seen. He sure has a presence about him and has lots of performance with tremendous structure. His dam is a beautifully made cow that is a standout. I would love to see a pen of steers and a group of replacement heifers out of him.

CE 1.5 BW 3.1 WW 33 YW 56 MCE 3.5 MILK 23

LOT

58



YEARLING RED ANGUS BULL

EPDS

RED EYE HILL COWBOY KIND 42H

PBS 42H 2169459 DOB: Feb 8/20

- | | |
|----------------------------------|--------------------------------|
| RED PIE THE COWBOY KIND 343 | RED BUF CRK THE RIGHT KINDU199 |
| S: RED COCKBURN COWBOY KIND 754E | RED PIE CASCADE 561 |
| RED COCKBURN MS HAUCK 459W | RED BAR-E-L RIBEYE 103R |
| | RED COCKBURN MS HAUCK 28N |
| RED LAZY MC SPLASH 14T | RED LAZY MC SMASH 41N |
| D: RED EYE HILL SYRINGA 1203 | LAZY MC BESS 4K |
| RED BAYSHORE SPICE 126S | RED PIRO NEW BRAND 110L |
| | RED GEIS SYRINGA 125'03 |

bw: 80 ww (Sep 15): 730 January 3: 1075



DAM

Moderate, stout, stylish, and hairy best describes 42H. He is designed for the heifer pen with the ability to graduate to the cow herd. The maternal genetics in his pedigree are some of the best we have ever offered. His dam is an extremely productive cow, his full sister sold this winter at the Touch of Class to Fraser Farms, MB.

CE 6.0 BW -0.3 WW 28 YW 55 MCE 10.0 MILK 25

LOT

59



RED EYE HILL COWBOY KIND 44H

PBS 44H 2169461 DOB: Feb 10/20

RED PIE THE COWBOY KIND 343
 S: RED COCKBURN COWBOY KIND 754E
 RED COCKBURN MS HAUCK 459W
 RED SIX MILE GAME FACE 164Y
 D: RED PASQUIA GOLDIE 27C
 RED PASQUIA GOLDIE 20Z

RED BUF CRK THE RIGHT KINDU199
 RED PIE CASCADE 561
 RED BAR-E-L RIBEYE 103R
 RED COCKBURN MS HAUCK 28N
 RED VGW GAME PLAN 816
 RED SIX MILE LAKOTO 35W
 RED WRAZ EAGLE 89W
 RED PASQUIA GOLDIE 52U

bw: 78 ww (Sep 15): 690 January 3: 1040



DAM

A Real nice made 'Cowboy Kind' son that is a great heifer bull option. His dam is a moderate tank of a cow that is extremely easy doing.

YEARLING RED ANGUS BULL

EPDS CE 8.0 BW -0.9 WW 30 YW 59 MCE 9.0 MILK 20

LOT

60



RED EYE HILL REVOLUTION 45H

PBS 45H 2169462 DOB: Feb 10/20

MERIT MIRAGE 5051
 S: HOWE MIRAGE 211E
 RED HOW LA KINA 175X
 RED PIE GAME ON 9109
 D: RED SPITTBURN SUE 505C
 RED SPITTBURN SUE 149Y

BAR-E-L IRON WILL 32Y
 MERIT LADY 7095
 RED HOW BOLD EDITION 80T
 RED M BAR T LAKINA 1R
 RED VGW GAME PLAN 508
 RED TPIE CASCADE 561
 RED SIX MILE CHEROKEE 350T
 RED RSL SUE 750J

bw: 90 ww (Sep 15): 790 January 3: 1090



DAM

Outcross genetics. This may be the most unique bull we have offered on a genetic standpoint to date. Smooth and correctly designed. His dam is a stunning cow that was one of my top picks when we purchased a group of Spittalburn cows a few years ago. We own the sire with Howes that left a great set of calves in the replacement pen.

YEARLING RED ANGUS BULL

EPDS CE -2.0 BW 3.1 WW 43 YW 75 MCE 2.0 MILK 20

LOT

61



RED EYE HILL ROOSEVELT 52H

PBS 52H 2169466 DOB: Feb 19/20

RED BIEBER ROOSEVELT W384
 S: RED FLYING K ROOSEVELT 46C
 RED FLYING K LANA 185Z
 RED SIX MILE RUFF RIDE 686A
 D: RED SPITTBURN MISSEY 773E
 RED SPITTBURN MISSEY 314A

RED BIEBER ROUGH RIDER 10712
 RED BIEBER SHEBA 9602
 RED BECKTON NEBULA U865
 RED FLYING K LASSIE 114S
 RED SIX MILE RAWHIDE 222X
 RED SUNBERRY INDEED 20Y
 RED RMJ REDMAN 1T
 RED SPITTBURN MISSEY 824U

bw: 82 ww (Sep 15): 715 January 3: 1025



DAM

A bull that commands a lot of attention whenever you see him. Moderate, hairy in a dark red package. He is very tough to fault and is a pen favorite. His dam is one of my favourite young cows and his grand dam, the 314A cow, will be entering our flush program very shortly.

YEARLING RED ANGUS BULL

EPDS 10.5 BW -0.6 WW 34 YW 61 MCE 9.0 MILK 27

LOT

62



RED EYE HILL COWBOY KIND 57H

PBS 57H 2169471 DOB: Feb 21/20

RED PIE THE COWBOY KIND 343
 S: RED COCKBURN COWBOY KIND 754E
 RED COCKBURN MS HAUCK 459W
 DFCC 32T REBEL 15X
 D: SPITTALBURN BAYBERRY 254Z
 RED SPITTALBURN BAYBERRY 518R

RED BUF CRK THE RIGHT KINDU199
 RED PIE CASCADE 561
 RED BAR-E-L RIBEYE 103R
 RED COCKBURN MS HAUCK 28N
 EASTONDALE BREAK AWAY 32'07
 EGGEN FAME MISS 8P
 RED STEWART FRONT MAN 1N
 RED CUMNOCK BAYBERRY 778L

bw: 92 ww (Sep 15): 760 January 3: 1070



DAM

If you're looking for a bull with some extra stretch, frame, and performance this would certainly be that kind of bull. His dam is a maternal sister to Spittalburn 704T cow that has been a highly recognizable in the Red Angus breed.

YEARLING RED ANGUS BULL

EPDS

0.0 BW 1.9 WW 45 YW 80 MCE 6.0 MILK 23

LOT

63



RED EYE HILL COWBOY KIND 58H

PBS 58H 2169472 DOB: Feb 22/20

RED PIE THE COWBOY KIND 343
 S: RED COCKBURN COWBOY KIND 754E
 RED COCKBURN MS HAUCK 459W
 RED GEIS KNIGHT HAWK 72'09
 D: RED SPITTALBURN KIT 549C
 RED SPITTALBURN KIT 49X

RED BUF CRK THE RIGHT KINDU199
 RED PIE CASCADE 561
 RED BAR-E-L RIBEYE 103R
 RED COCKBURN MS HAUCK 28N
 RED GEIS KNIGHT HAWK 223'06
 RED GEISS BLOCKANA 139'06
 RED SIX MILE NEW BLOOD 153N
 RED SHODEREE KIT 206K

bw: 84 ww (Sep 15): 705 January 3: 1020



DAM

A bull that is quickly found in the pen, super stout, has a real presence about him. A bull that could run with heifers and cows and get the job done. His dam is an easy doing deep bodied cow.

YEARLING RED ANGUS BULL

EPDS

CE 3.0 BW 0.5 WW 32 YW 60 MCE 7.0 MILK 19

LOT

64



RED EYE HILL COWBOY KIND 73H

PBS 73H 2169477 DOB: Mar 22/20

RED PIE THE COWBOY KIND 343
 S: RED COCKBURN COWBOY KIND 754E
 RED COCKBURN MS HAUCK 459W
 RED RSL REDMAN 280Z
 D: RED SPITTALBURN SHEBA 760E
 RED WRAZ SHEBA 53X

RED BUF CRK THE RIGHT KINDU199
 RED PIE CASCADE 561
 RED BAR-E-L RIBEYE 103R
 RED COCKBURN MS HAUCK 28N
 RED RMJ REDMAN 1T
 RED RSL SIERA 304N
 REDD DIMLER INDEED 105R
 RED CLAY MISS BODACIOUS 1L

bw: 78 ww (Sep 15): 620 January 3: 960



DAM

A really nicely patterned young bull that doesn't give up much to his pen mates for just being a March calf. We typically don't offer calves this age, but with his development he is the right kind. Sure-fire heifer bull.

YEARLING RED ANGUS BULL

EPDS

CE 1.5 BW 1.6 WW 39 YW 72 MCE 6.5 MILK 21

LOT 65



16 F1 HYBRID HEIFERS

STANDARD HILL LIVESTOCK

born April-May 2020

All heifers are off registered parents, either:
Polled Hereford Bulls on Black Angus Cows
or
Black Angus Bulls on Polled Hereford Cows

Will be sorted into 4 or 5 groups



SIRE



SIRE



SIRE



SIRE

Open heifers

LOT 66



6 RWF/RBF HEIFERS

GANZER RANCHES

born April 2020

Open heifers

LOT 67



6 STRAIGHT RED ANGUS HEIFERS

EYE HILL STOCK FARM

born Feb-Mar 2020

Open heifers

LOT 68



7 RED ANGUS X HEIFERS

COLLINGS LAND & CATTLE

born Feb-Mar 2020

Open heifers

LOT

69-DONATION HEIFER



DUTCH AUCTION PROCEEDS TO THE LLOYD EXHIBITION & MAIDSTONE CURLING CLUB

Open F1 Hereford Angus Heifer

Born April 11/2020 bw: 85 205 d wt: 700

Sire: Standard-Hill Untapped 59D

(Purebred Polled Hereford)

Dam: Standard-Hill Ann 388D

(Purebred Black Angus-unregistered)

All three of the sale consigners have many ties to the Lloydminster Agricultural Exhibition Association with Michael, Brennan, Taryn, Stephen, and Christine growing up through the local 4-H scene and attending Lloydminster 4-H Expo. We have all benefitted from functions at the Exhibition and the Gerlinskys and Schachtels celebrated their wedding days there..

Curling is a large part of all our lives and something we hope to enjoy with our children in the future. Like so many places, Covid-19 has crippled these organizations and their ability to continue on. Help us kick Covid in the a\$\$.



DONATED BY THE STANDARD HILL CONNECTION SALE GROUP - EYE HILL STOCK FARM, MG ANGUS, STANDARD HILL LIVESTOCK

THANK YOU TO LAST YEAR'S BUYERS

2020 STANDARD HILL CONNECTION

Scallywag Farms Ltd.
James Simmonds
Holtby Farms
Brian Pollock
Brendon Alm
Forest Bank Ranch
Fairholme Grazing Association
RM of Excelsior No. 166
Ronald Gory
Lone Spruce Ranching
Chad Wiltermuth
Dexter Slugoski
Robert Dunsmore
Bob Gristwood

RWR Farms
Burt Boldt
Darcy Dreidger
Karin Larsson
Chris Danychuk
Matt Lohner
Fort Pitt Farms
Collinge Land & Cattle
Howe Red Angus
Royal Rock Angus
Ron Embree
Glenlees Polled Herefords
Leon Stang
Forbes Brothers

Nathan Rollheiser
David Owen
Z Bar Angus
Robert Preece
Ganzer Ranch
Denis & Theresa Ulmer
Allan & Margret Chisholm
Brian MacDonald
Harry Lake
Gordon Spencer
Bob McIntyre
Ross Bricker
Silver Willow Stock Farm

HIGH SELLERS



SHL HEIFERS FOR SALE BY PRIVATE TREATY



SHL PRIDE 16H

dob: Jan 26/2020
 bw: 62 lbs
 205d wt: 600
 sire: Flo Rider 22F
 dam: Pride 338F
 mgs: Bengal 479A



SHL CHELAN 105H

dob: Apr 17/2020
 bw: 80 lbs
 205d wt: 680
 sire: Maverick 25E
 dam: Chelan 33Y
 mgs: Beefman 28U



SHL PRIDE 32H

dob: Feb 5/2020
 bw: 87 lbs
 205d wt: 630
 sire: Fortitude 6004D
 dam: Pride 364E
 mgs: Quantum 55Y



SHL KARISTA 114H

dob: Apr 20/2020
 bw: 81 lbs
 205d wt: 590
 sire: Matrix 49E
 dam: Karista 28B
 mgs: Max 151Z



SHL ANN 41H

dob: Feb 18/2020
 bw: 83 lbs
 205d wt: 660
 sire: Major 350C
 dam: Ann 366E
 mgs: Bando 45A



SHL CLARA 136H

dob: Apr 13/2020
 bw: 94 lbs
 205d wt: 625
 sire: Maverick 25E
 dam: Clara 66E
 mgs: You Tube 4Y



SHL ANN 46H

dob: Feb 1/2020
 bw: 81 lbs
 205d wt: 580
 sire: Fortitude 6004D
 dam: Ann 380E
 mgs: Trade Secret



SHL BECKY 156H

dob: Jan 28/2020
 bw: 74 lbs
 205d wt: 550
 sire: Magnet 109E
 dam: Becky 121F
 mgs: Logic 112D



SHL ANN 49H

dob: Feb 3/2020
 bw: 78 lbs
 205d wt: 580
 sire: Flo Rider 22F
 dam: Ann 388F
 mgs: Dispute 6125



SHL INDIGO 170H

dob: Apr 6/2020
 bw: 95 lbs
 205d wt: 655
 sire: Mater 82F
 dam: Indigo 74D
 mgs: Quigley 20B



SHL QUEENY 51H

dob: Feb 10/2020
 bw: 79 lbs
 205d wt: 615
 sire: Dispute 6125
 dam: Queeny 2Y
 mgs: Final Answer



SHL FANCY 187H

dob: Apr 13/2020
 bw: 78 lbs
 205d wt: 615
 sire: Matrix 49E
 dam: Fancy 140C
 mgs: Harlan 7Y

Call Stephen at 306-893-8414 for pricing and to arrange viewing at Standard Hill

Terms and Conditions

Terms: All sales are in Canadian Funds, payable by cash or cheque on sale day, unless other arrangements have been made prior to the sale. Every animal sells to the highest bidder, and in cases of disputes the auctioneer will make the decision to reopen the bidding. The auctioneer's decision will be final. Each animal becomes the responsibility of the purchaser as soon as sold.

Announcements: Any announcements from the stand take precedence over print.

Guarantee: All animals are backed by the respective breed associations Breeder Guarantee. All bulls will be semen tested before the sale, weather permitting. A list of semen evaluation results will be available at the sale or by calling the consignors the day before the sale. In the case of harsh winter weather leading up to semen testing, bulls will be palpated and scrotal measured prior to the sale and semen tested once the weather effects are less impactful. Bulls that are semen tested prior to the sale may be deferred. Deferred bulls may be sold, in which case they will be semen tested satisfactory prior to delivery. Hereford bulls sold to purebred breeders will be parentage and genetic defect tested by the seller prior to delivery. Angus bulls sold to purebred breeders will be parentage verified by the seller prior to delivery. Any other parentage or defect testing may be requested by the purchaser, however cost may be the responsibility of the purchaser. All genetic testing results will be shared with the purchaser.

Delivery: Free delivery within 500 km or to central locations in Saskatchewan and Alberta with consideration of volume and value of purchases.

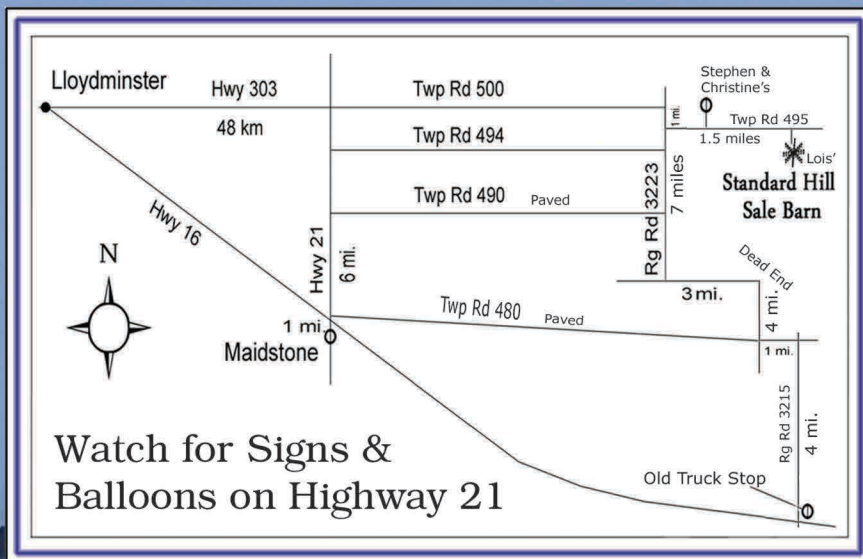
Feeding/Wintering Program: Purchases can be sent back to their home pens and remain under consignor's management until May 15th free of charge. We strongly recommend you insure your purchases for liability reasons.

Insurance: The sellers encourage the purchasers to insure animals that remain at the seller's ranch due to liability. We can suggest an insurance agent to fulfill your needs, but there will not be a affiliated insurance provider at the sale.

Sight Unseen Purchases: Call the consignors to discuss what type of animal you require and your purchase price in mind. Sellers will do their best to fill your orders. Sellers encourage buyers to utilize the sales staff as well as picture and video to aid in selection.

All persons who attend the sale do so at their own risk.

COVID 19 Government Regulations will be in effect at the sale location. Plan accordingly.



Can't make it to the sale? Internet Bidding Available.

To view this sale visit www.dlms.ca, Fill out the registration form located under registration and sign-up for your free user account and select a username and password.

BIDDERS - To be approved as a bidder, Log in to dlms.ca and click BUYER APPROVAL tab, select the sale you are interested in bidding at and click sign up.

For more information

Call DLMS Reps:

Mark Shologan - 780-699-5082 or
DLMS Purebred Team 780.991-3025

DLMS
www.dlms.ca

**Return Undeliverable to:
Standard Hill Livestock
PO Box 227
Maidstone, SK S0M 1M0**

www.shlivestock.com

*Please Bring this Catalogue
With You to the Sale*



STANDARD HILL CONNECTION

Friday, March 12, 2021 2 pm MST on farm and online at dlms.ca

For more information
Call DLMS Reps:
Mark Shologan - 780-699-5082 or
DLMS Purebred Team 780.991-3025

DLMS
www.dlms.ca